

Crash Analysis Studio

Session 4: Meridian, Idaho

April 28, 2023





**Traffic Box Art Wrap
with Terry's Artwork**

Today's Panelists

Erik Bootsma

Joyce Johnson

Adrienne Weatherly

Micah Deffries

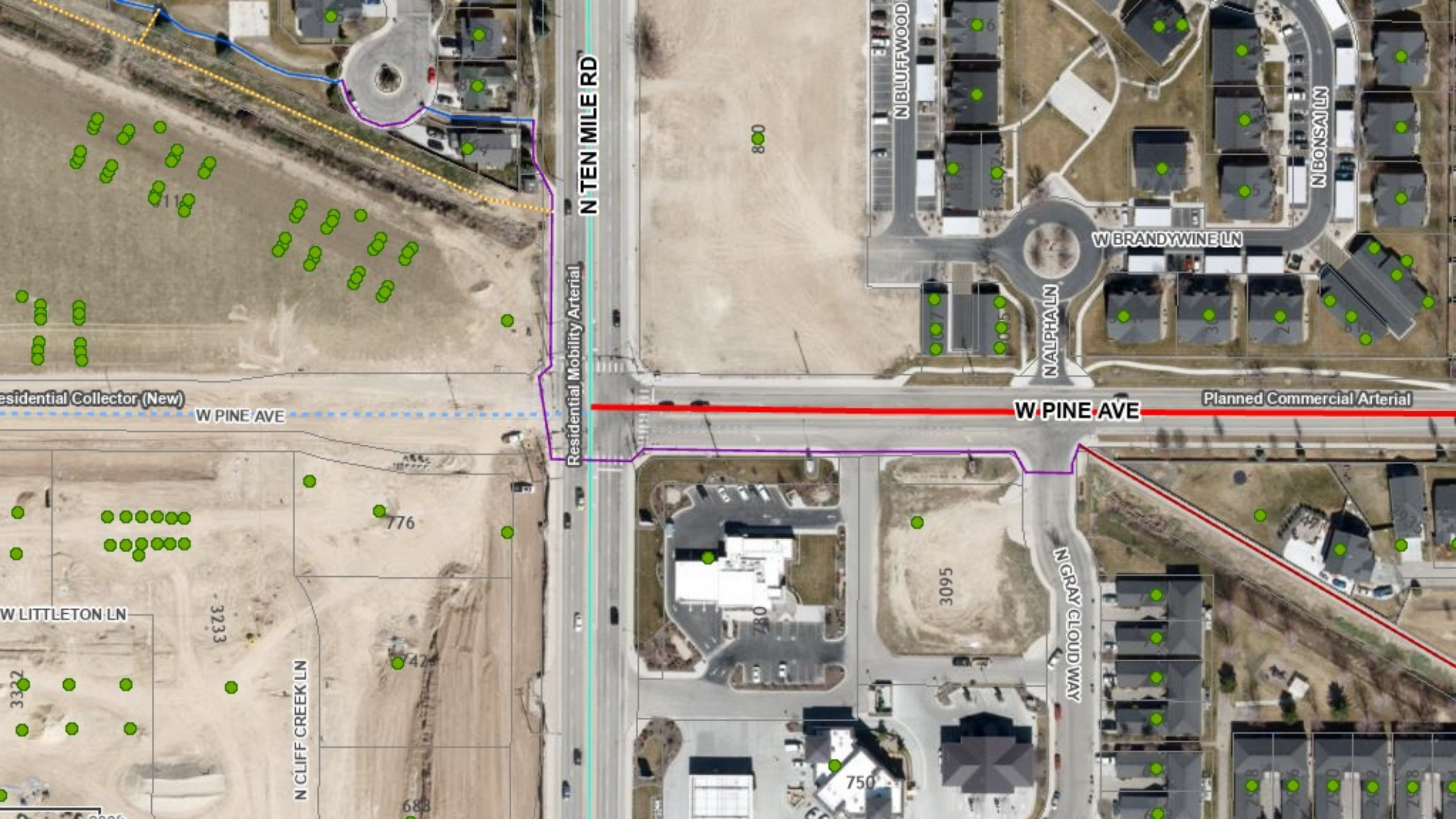
Edward Erfurt

Crash Information

- Meridian High school student Terry Binder (16 years old) fatally struck by a pickup truck while crossing Ten Mile Road at the Ten Mile Road & Pine Avenue intersection.
 - Meridian police department indicated the investigation is still ongoing, so a crash report is unavailable
 - Media coverage indicates Terry was crossing to the west side of the road; however, Terry's father (Joshua Binder) also states Terry was walking to school, which would mean he was headed east
- Occurred at approximately 7:42am on November 2, 2022
- Weather reports indicate it was cloudy & there was rain the previous night; roadways may have been slightly slick

Crash Information

- Volunteers documented the Ten Mile Road speed limit is posted at 40mph while the Pine Avenue speed limit is posted at 35mph
- Motorist was traveling north on Ten Mile Road
- Binder was walking west or east across Ten Mile Road
 - Conflicting reporting
- Collision took place on either the south or north side of Ten Mile Road
- Media indicates the driver stayed at the scene of the crash and has not been issued any charges or citations



N TEN MILE RD

Residential Mobility Arterial

Residential Collector (New)

W PINE AVE

W PINE AVE

Planned Commercial Arterial

N BLUFFWOOD

W BRANDYWINE LN

N ALPHA LN

N BONSAI LN

N GRAY CLOUD WAY

W LITTLETON LN

N CLIFF CREEK LN

800

776

742

3233

3095

780

750

3322

688

798

797

796

795

798

797

796

795

798

797

796

795

798

797

796

795

798

797

796

795

798

797

796

795

798

797

796

795

798

797

796

795

798

797

796

795

798

797

796

795

798

797

796

795

798

797

796

795

798

797

796

795

798

797

796

795

798

797

796

795

798

797

796

795

798

797

796

795

798

797

796

795

798

797

796

795

798

797

796

795

798

797

796

795

798

797

796

795

798

797

796

795

798

797

796

795

798

797

796

795

798

797

796

795

798

797

796

795

798

797

796

795

798

797

796

795

798

797

796

795

798

797

796

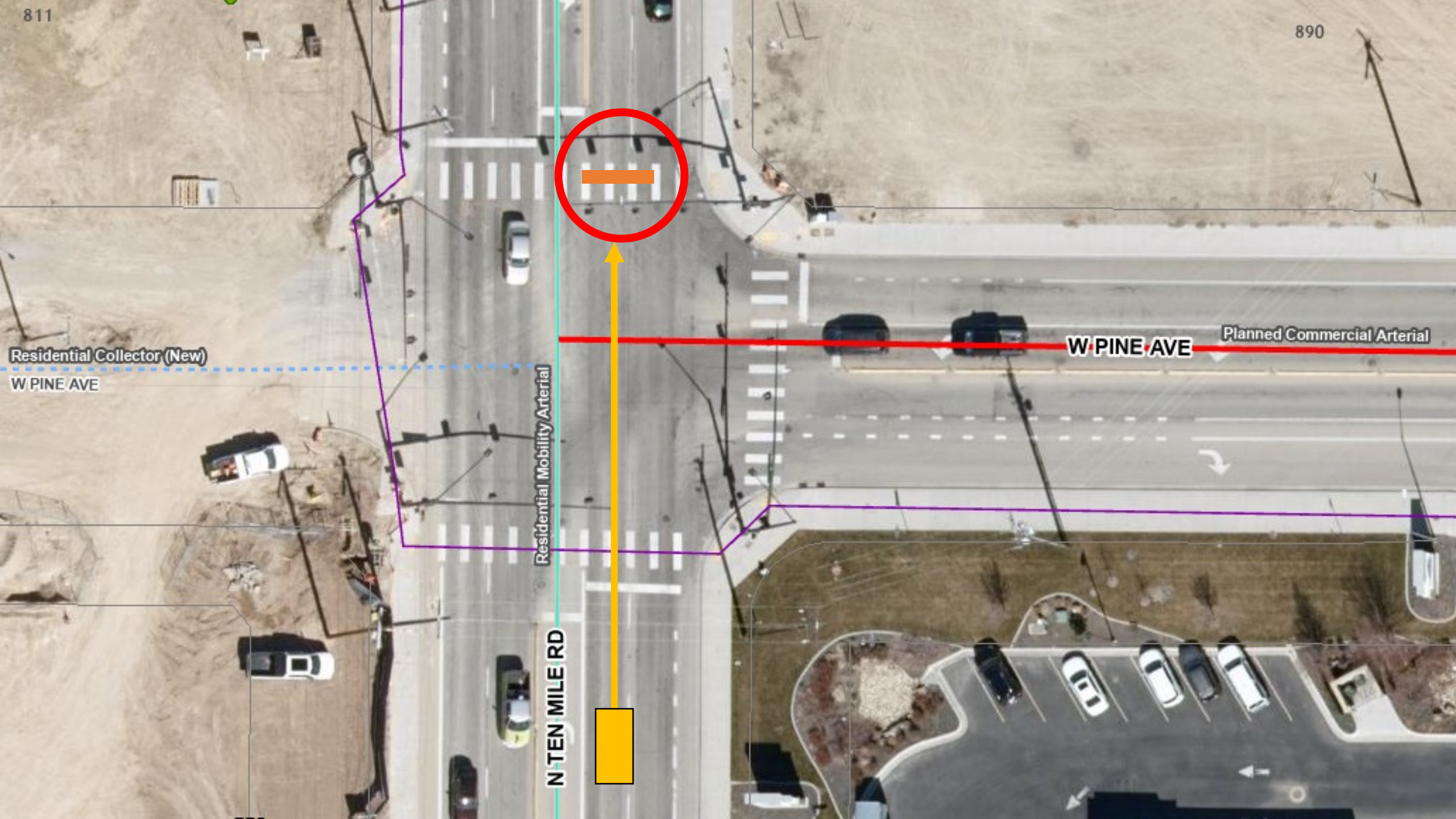
795

798

797

796

795

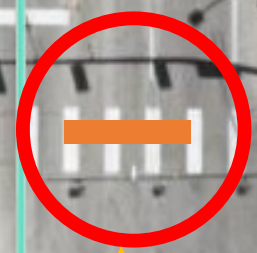


Residential Collector (New)
W PINE AVE

Residential Mobility Arterial

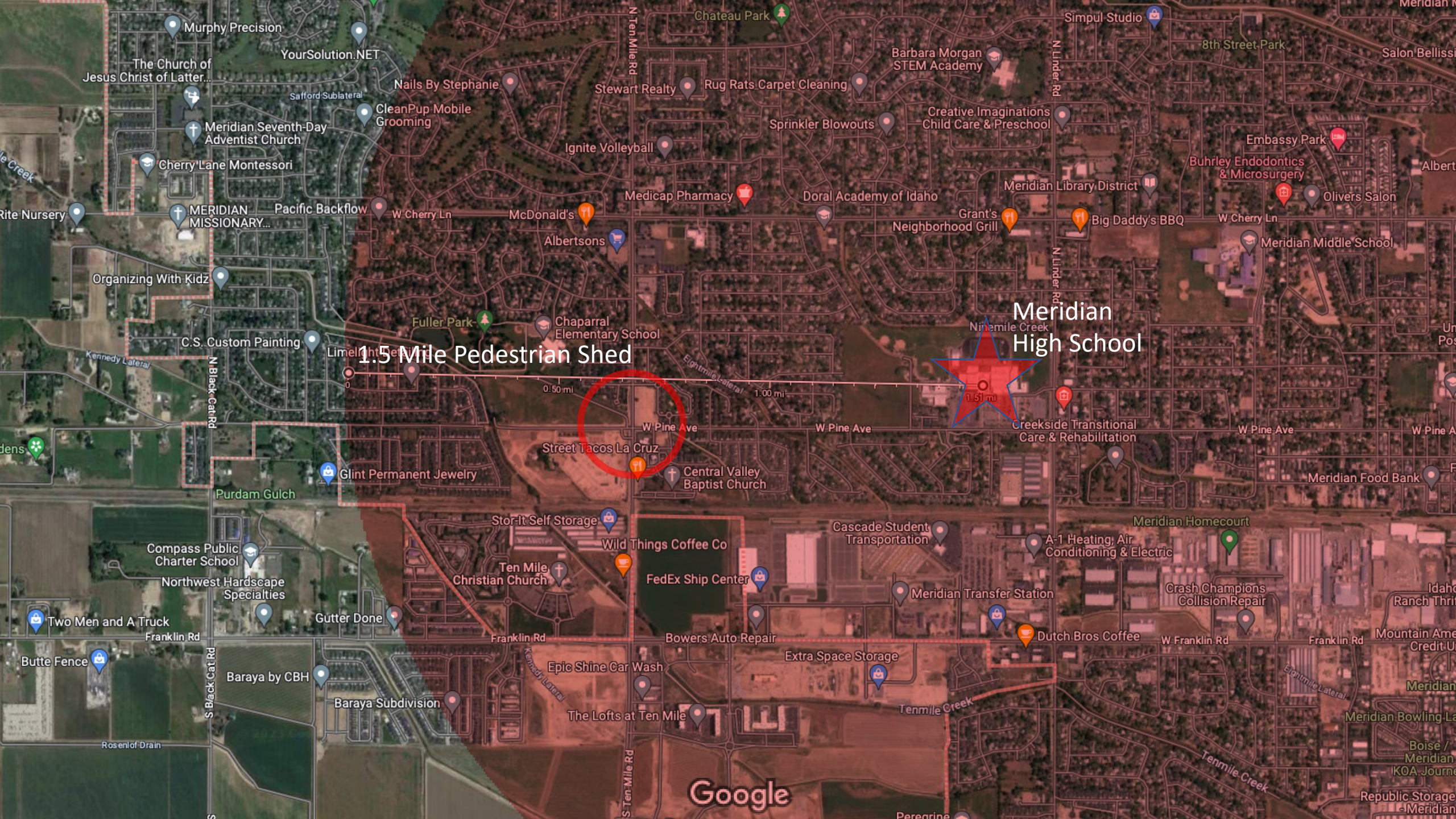
N TEN MILE RD

W PINE AVE
Planned Commercial Arterial



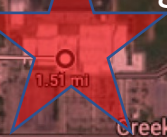
Crash Details

- Investigation is ongoing - witness and/or driver statements are unavailable; Ada County Coroner's Office said manner of death is still "pending".
- According to media, motorist...
 - Was driving a blue GMC pickup truck and was not injured
 - Stopped post-collision; has been cooperative with the investigation
- Walk zone for Meridian High School - no designated bus service within 1.5 miles of the school
- One news correspondent stated the speed limit was between 40 & 45mph – reflects multiple speed limits along Ten Mile Road (45 @ 103 S. Ten Mile)



1.5 Mile Pedestrian Shed

Meridian High School



1.51 mi

Google

Overall Site Conditions

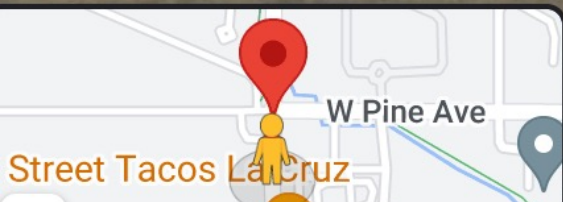
- **Stroad Environment:** This segment of Ten Mile has a 40MPH speed limit; Pine Avenue has a 35 MPH speed limit.
- **Ten Mile Road, Northbound & Southbound** consist of 3 lanes; 2 for thru traffic and one dedicated left turn lane to go either east or west on Pine
- Crosswalks with clear pushbuttons; back plated signals on pole fixtures across each of the four intersection segments
- During the past two decades, the turn lanes were added to this intersection during redevelopment – making the crossing distance longer

© 2023 Google

W Pine Ave

Connections
Connecting Southeast Alaska

700 N. PLYMOUTH RD.



Northbound Entering Intersection

Meridian, Idaho

Google Street View.

Jun 2015

[See more dates](#)



Google

West Bound Entering Intersection

**NORTH SIDE
TEN MILE & PINE**

- Sidewalk – 8' →
- Bike Lane – 6' →
- Thru Lane – 11.5' →
- Thru Lane – 11.5' →
- Turn Lane – 12' →
- Thru Lane – 12' →
- Thru Lane – 11' →
- Bike Lane – 5' 6" →
- Sidewalk – 8' →

Total Width – 85' 6"

**Width w/o
Sidewalks – 69' 6"**



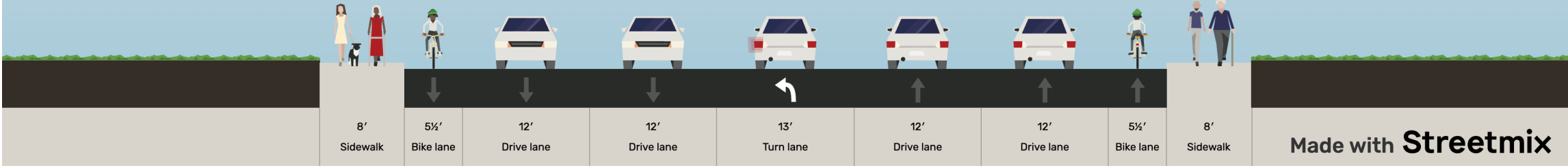
**SOUTH SIDE
TEN MILE & PINE**

- ← Sidewalk – 8'
- ← Bike Lane – 5' 6"
- ← Thru Lane – 12'
- ← Thru Lane – 12'
- ← Turn Lane – 13'
- ← Thru Lane – 12'
- ← Thru Lane – 12'
- ← Bike Lane – 5' 6"
- ← Sidewalk – 8'

Total Width – 88'

**Width w/o
Sidewalks – 72'**

N. Ten Mile Road (South of W. Pine Avenue)





North Side of East Pine Avenue
(Looking West)



**Pedestrian POV, Full Intersection
East Side of South Ten Mile**



**Pedestrian POV, Full Intersection
West Side of North Ten Mile**



**Pedestrian POV, Full Intersection
East Side of South Ten Mile facing North**

Overall Site Conditions

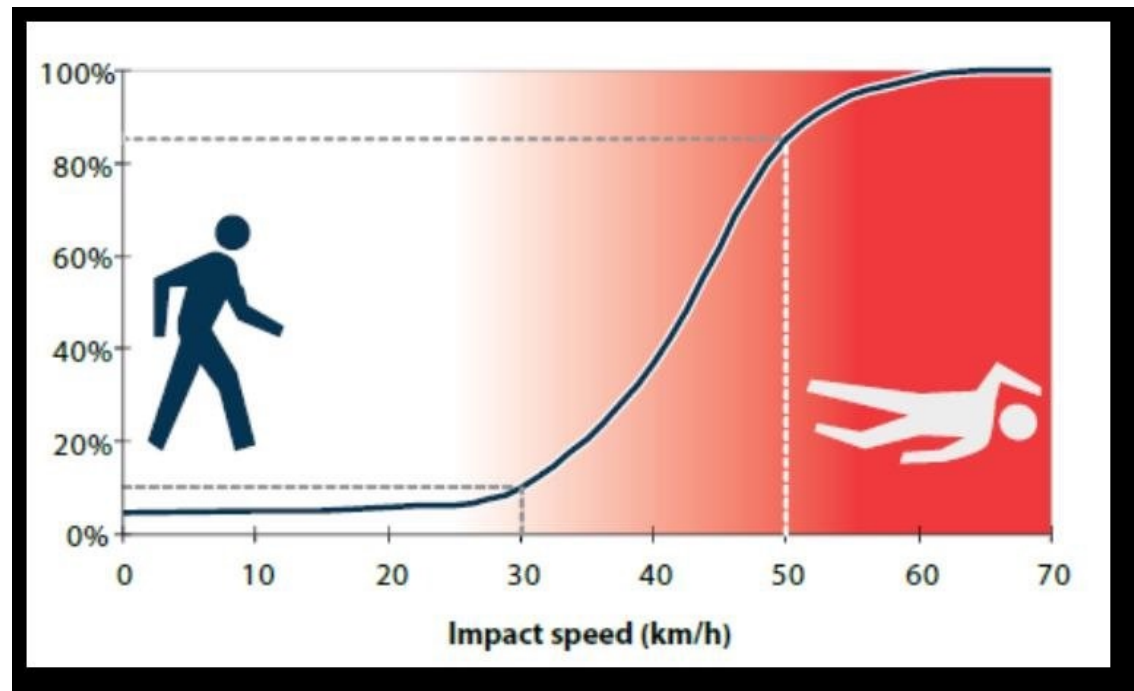
- Sub-Urban development pattern that is Auto-Oriented
 - Proximity to Meridian High School, Chaparral Elementary, & Compass Public Charter School – Limited Busing
 - Albertsons, McDonalds, FedEx Shipping Center in surrounding area
 - Single Family Subdivisions
- 1 mile by .5 Mile City Grid
 - Development within this grid has limited connectivity
 - Ten Mile Rd and Pine Ave extend through the entire City
 - Nearby Interstate 84

Overall Site Conditions

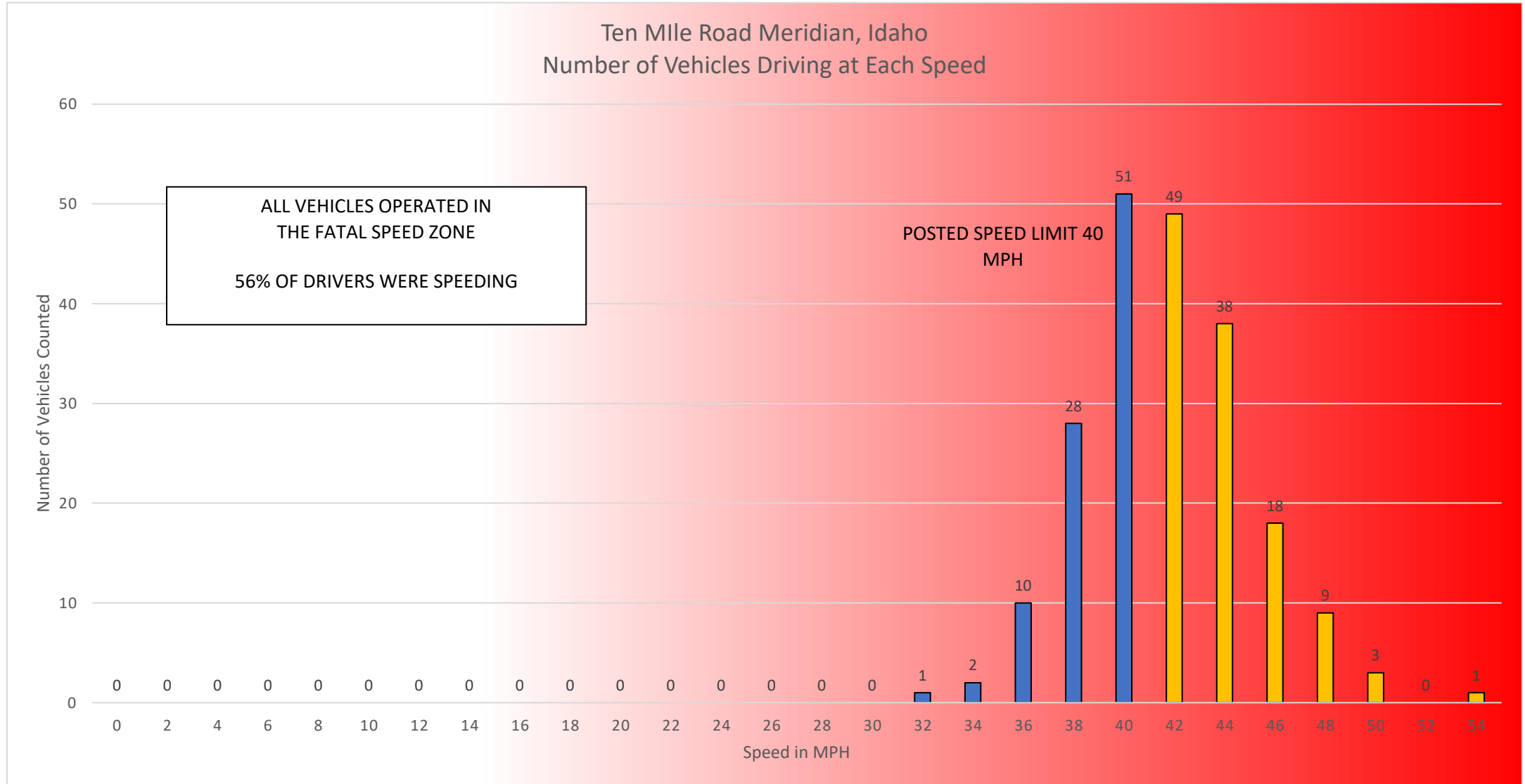
- Preliminary Speed Study indicates significant number of automobiles traveling at fatal speeds

The effects of higher speed limits on traffic fatalities in the United States, 1993–2017.

-Insurance Institute for Highway Safety



Speed Data



*85th percentile speed = 44 MPH

Acknowledgements & Special Thanks

- Our Panelists
- Nominator Marcus Batson
- Adrienne Weatherly and Don Kostelec for their help with gathering measurements & information
- Other Meridian community members who assisted with resource-gathering
- The Binder Family
 - A [fundraiser in honor of Terry](#) is still online – we'll share the link in chat now and in our materials after the session.
- Strong Towns Staff