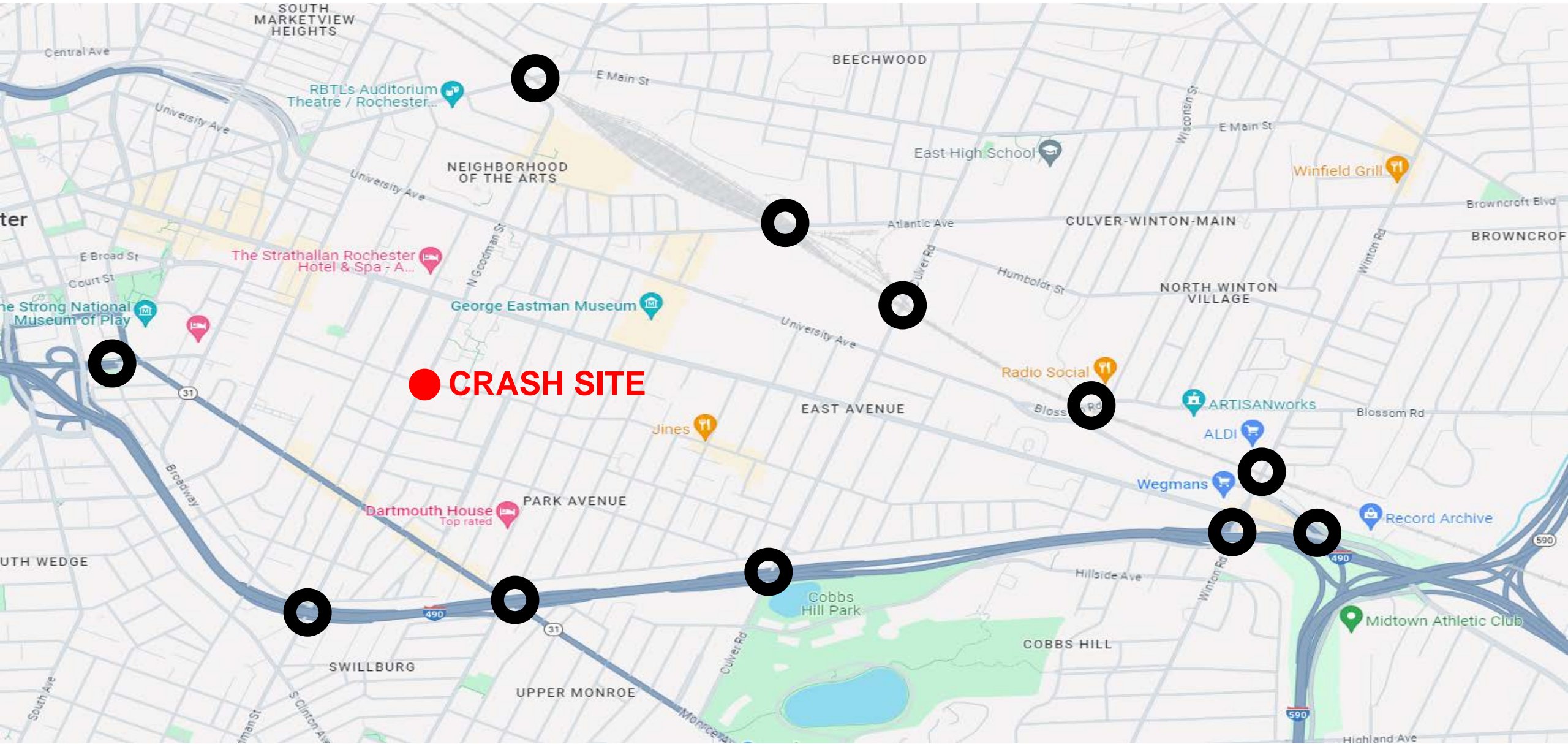
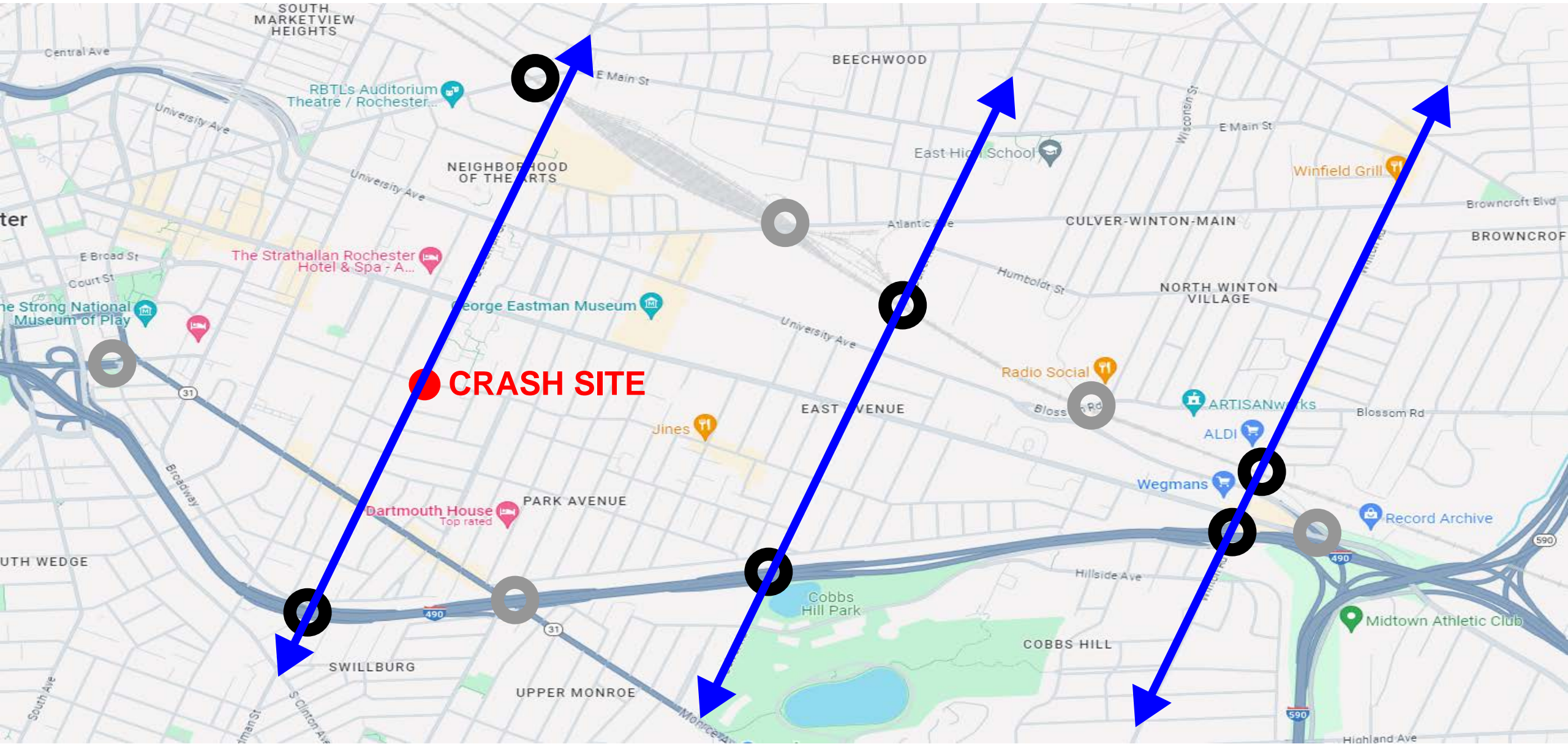


Source: Google Maps



Source: Google Maps



Source: Google Maps

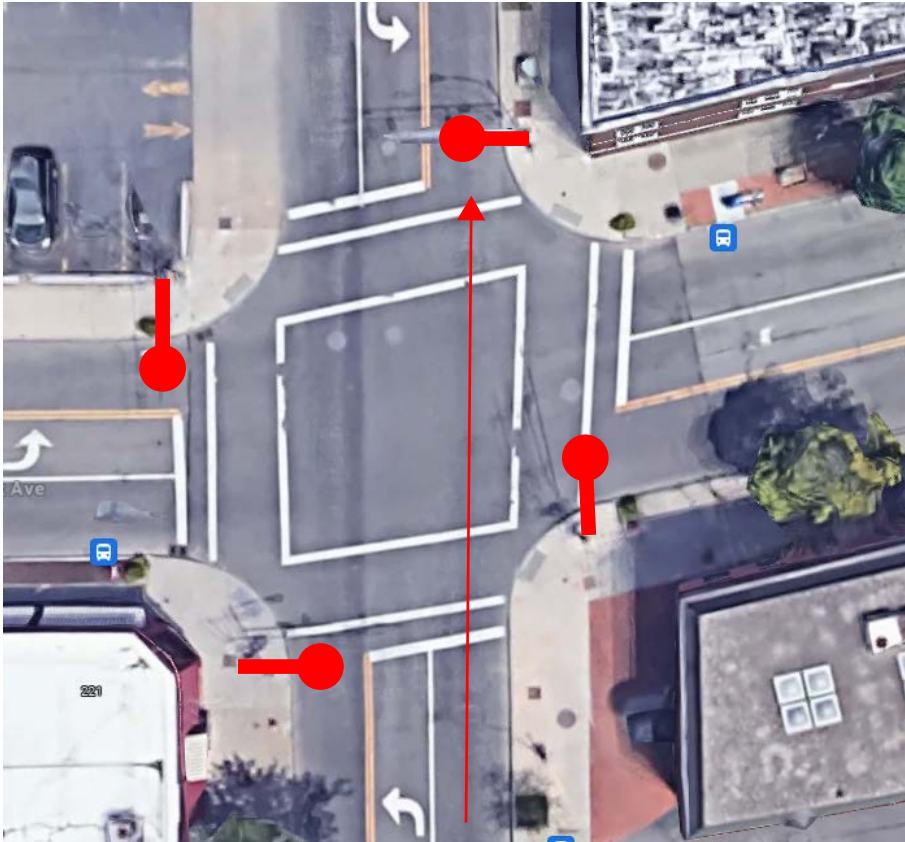


Goodman Street, looking north. Approx ~1600' from Park Avenue

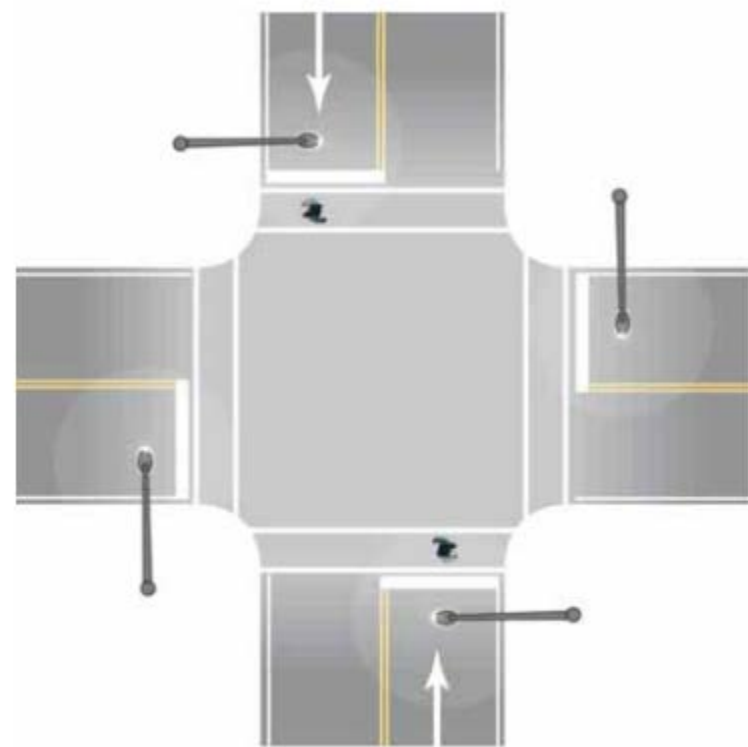


Goodman Street, looking north. Approx ~200' from Park Avenue

Lighting



Source: Google Maps



Source: FHWA "Informational Report on Lighting Design for Midblock Crosswalks", Figure 14



Source: News10NBC Rochester,
<https://www.whec.com/top-news/large-police-presence-at-park-ave-and-south-goodman/>