

# Crash Analysis Studio

Session 13: Carlsbad, California

January 19, 2024



# Today's Panelists

Anthony Catania

Thomas LaCroix

Pete Penseyres

Edward Erfurt

# Crash Information

- 35-year-old Christine Hawk Embree was traveling with her 16-month-old daughter Delilah on her e-bike near the intersection of Basswood Avenue and Valley Street
- 42-year-old motorist Lindsay Turmelle struck Christine and Delilah at the intersection
  - Turmelle's defense attorney indicated that she looked down for a moment while driving and that this caused the accident that took Christine's life
  - We believe Turmelle ran through the stop sign
- Crash occurred around 5:45pm on August 7, 2022
  - Our local contact was denied access to a copy of the police report since they were not a party to the collision

# Crash Information

- Christine was transported to a local hospital and died on Monday, August 8, 2022
  - Delilah was wearing a helmet and survived the crash with—to our knowledge—only minor injuries.
- Turmelle remained on the scene after the collision and cooperated with Carlsbad Police
- Police determined that drugs or alcohol were not factors in the crash





Kids Care Spot Day  
Care & Preschool

Carlsbad High  
School Baseball Field

Carlsbad High Sch





1696

Valley St

Basswood Ave

Basswood Ave

Valley St

Basswood Ave

nd Ave

Valley St

# Crash Details

- The posted speed limits on both Basswood Avenue and Valley Street are 25 mph
- Turmelle pled guilty to misdemeanor vehicular manslaughter
- Turmelle was sentenced to 90 days in county jail and 90 days of home detention
  - She is also required to speak at 10 traffic school events and complete 50 hours of volunteer work

# Responses from the City

- Rolled out Safer Streets Plan & Safer Streets Together initiative after declaring a local state of emergency on August 23<sup>rd</sup>
  - This plan references dozens of projects; charts actions on a timeline from 3 months to 1+ years
- Installed 5 speed humps and raised crosswalks at different intersections along the parallel roadway Tamarack Avenue
- Engaged engineers on actions like bike lane enhancements, digital roadway messaging, and upgrading high-pedestrian signal locations
- Built out educational campaigns and community engagement efforts



# Overall Site Conditions

- **Basswood Avenue and Valley Street each** consist of **two** through travel lanes with accommodations for unmarked parallel parking
- There are no sharrows (arrows indicated shared motorist & cyclist usage) painted along Basswood Avenue or Valley Street, though the intersection is marked with a school crossing sign
- The intersection is unsignalized; crossing areas are marked with yellow paint





**Viewing Approximate Crash Location  
Facing NE on Basswood**





Looking NE at Basswood  
From Middle of Intersection





**SW of Intersection  
Looking NE onto Basswood**





**NE of Intersection  
Looking onto Basswood**





**NW of Intersection  
Looking S/SE onto Valley**





**SE of Intersection  
Looking at Valley + Basswood**





**SW of Intersection  
Looking SW on Basswood**





CITY OF CARLSBAD  
760-332-6464  
carlsbadca.gov/service

ER TOGETHER  
W DOWN  
LSBAD

SLOW DOWN  
CARLSBAD

SLOW DOWN  
CARLSBAD

25

PEDESTRIAN

WINDY BUSH

STOP

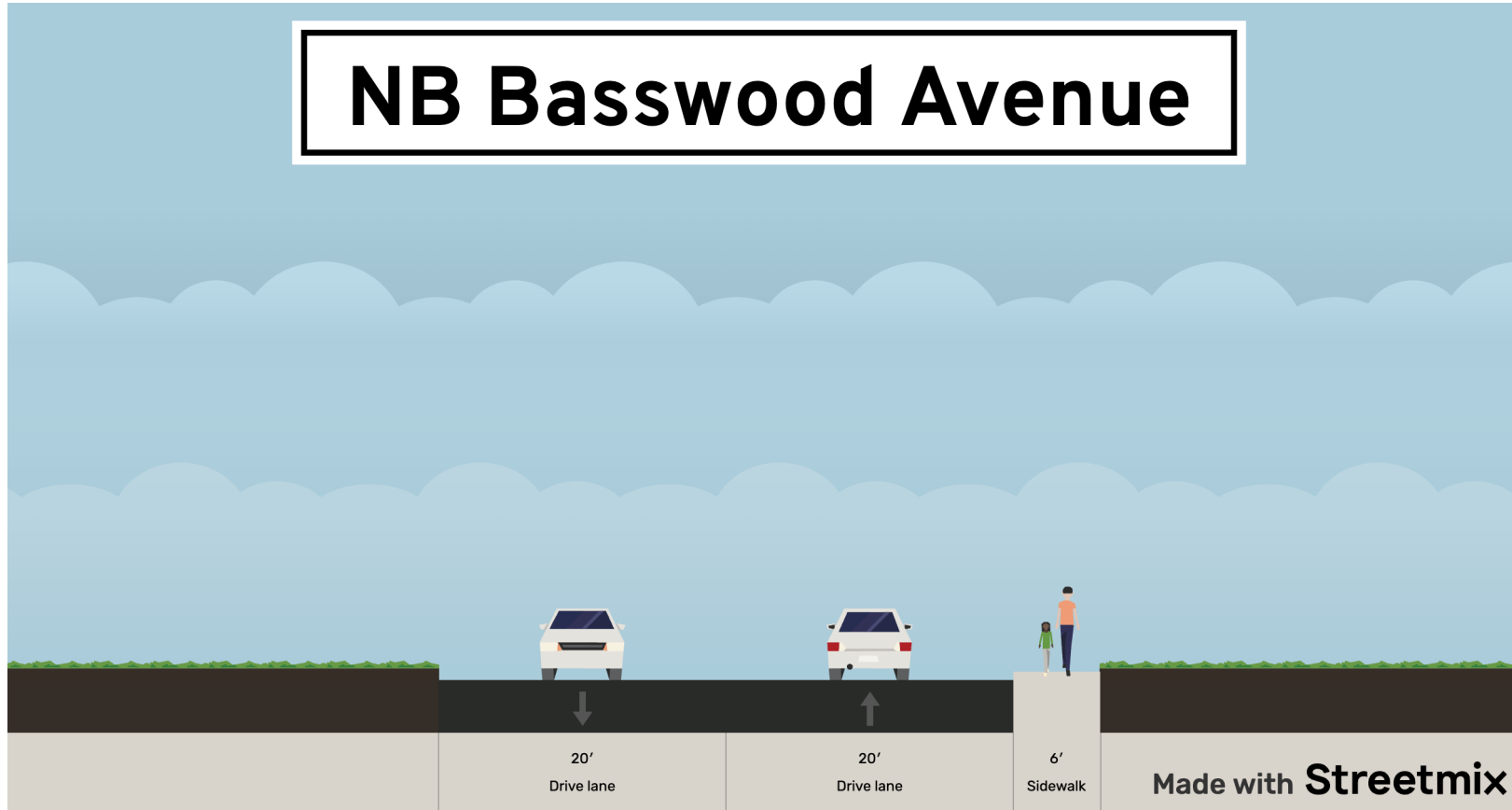
PLEASE  
SLOW  
DOWN

**SW of Intersection  
Basswood Signs**





# NB Basswood Avenue



1 Sidewalk: 6' wide

2 Travel Lanes w/ unmarked parking : 20' each

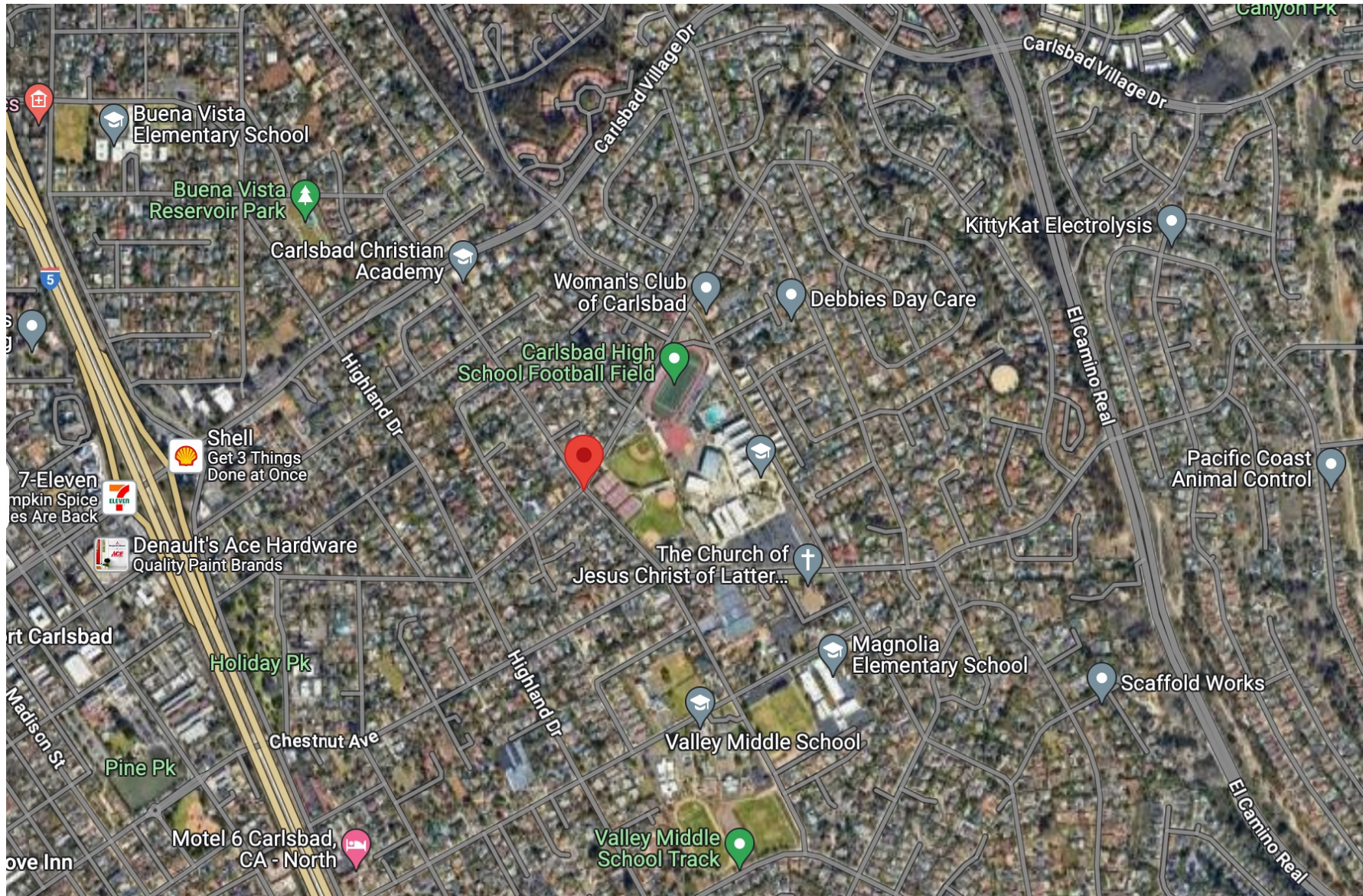
Width: 46'

(Large yard & grass area on either side of the intersection)

# Overall Site Conditions

- Sub-Urban Residential Development Pattern
  - Multiple neighborhoods with various size homes
- Proximity to Interstate 5 and Carlsbad Village Drive
- Multiple schools nearby, including:
  - Carlsbad High School
  - Valley Middle School
  - Magnolia Elementary School
  - Carlsbad Christian Academy
  - Buena Vista Elementary School





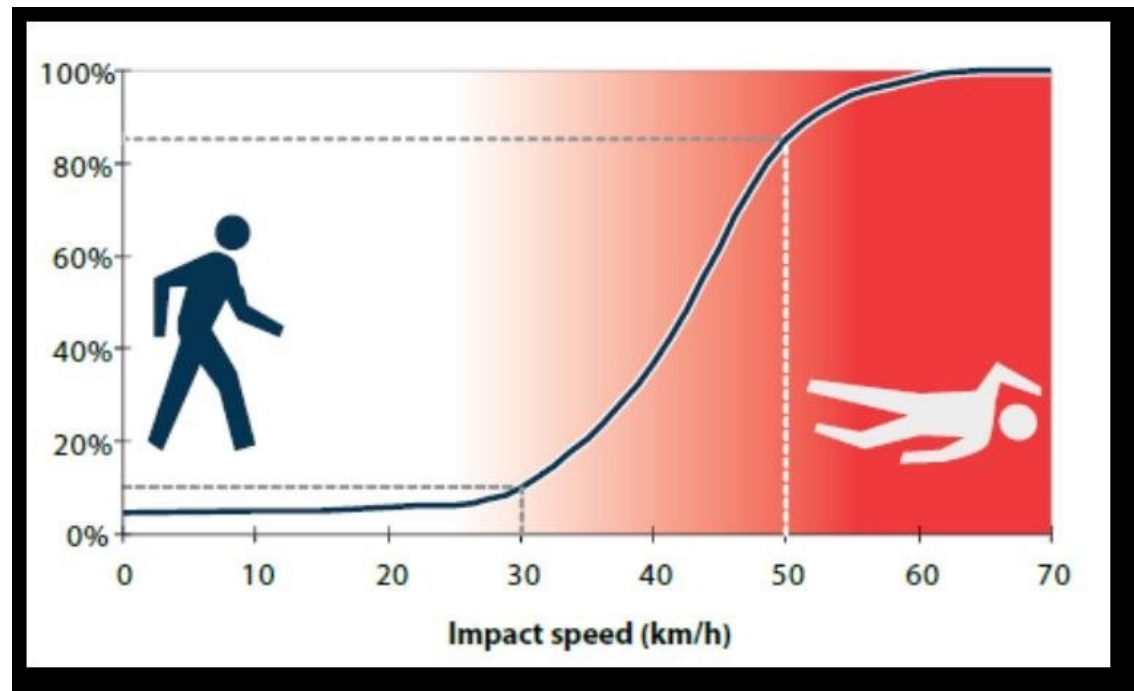


# A Closer Look at Speeding

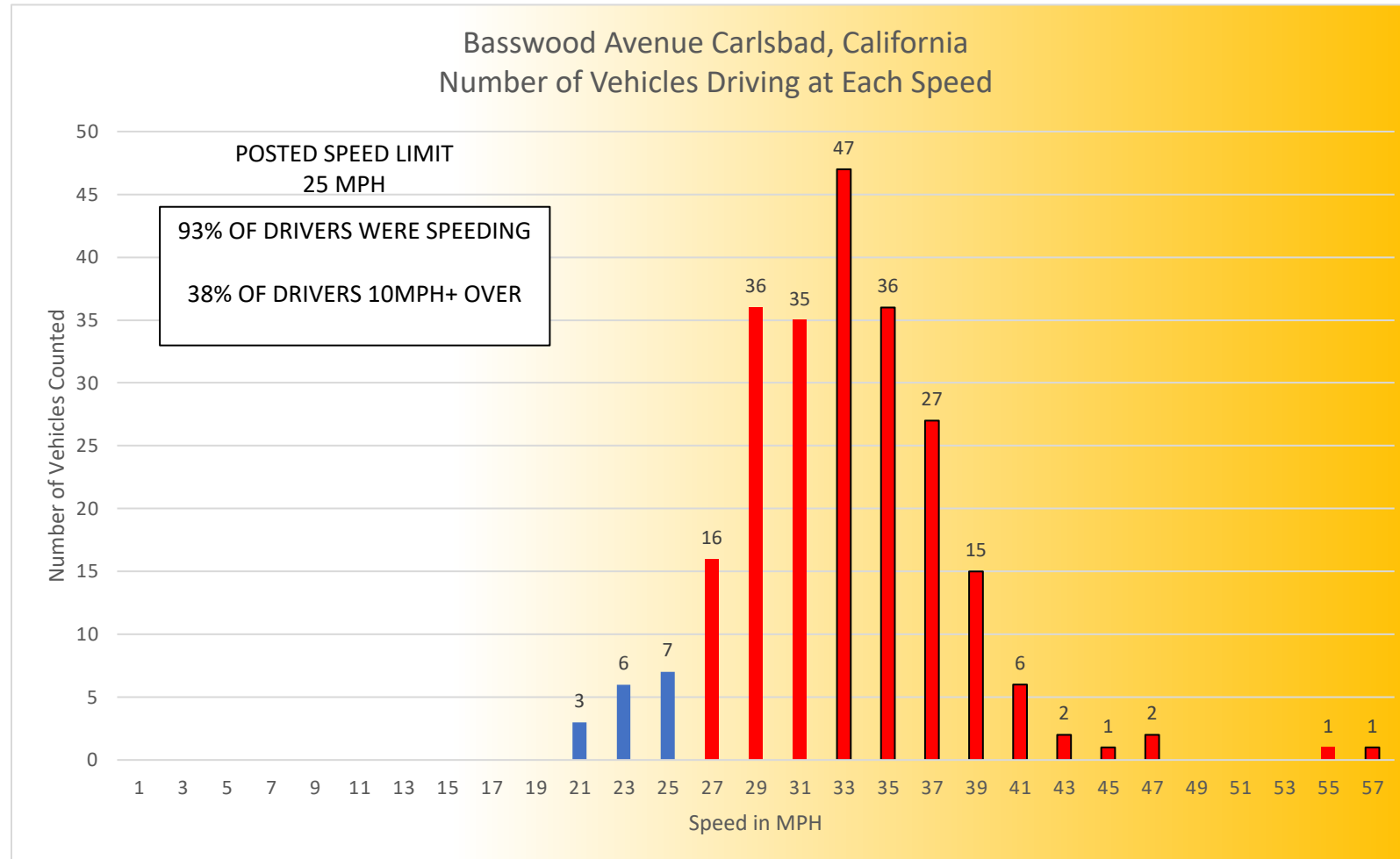
- Preliminary Speed Study indicates significant number of automobiles traveling at fatal speeds

The effects of higher speed limits on traffic fatalities in the United States, 1993–2017.

-Insurance Institute for Highway Safety



# Speed Data



242 cars tracked  
85<sup>th</sup> percentile speed: 37 mph

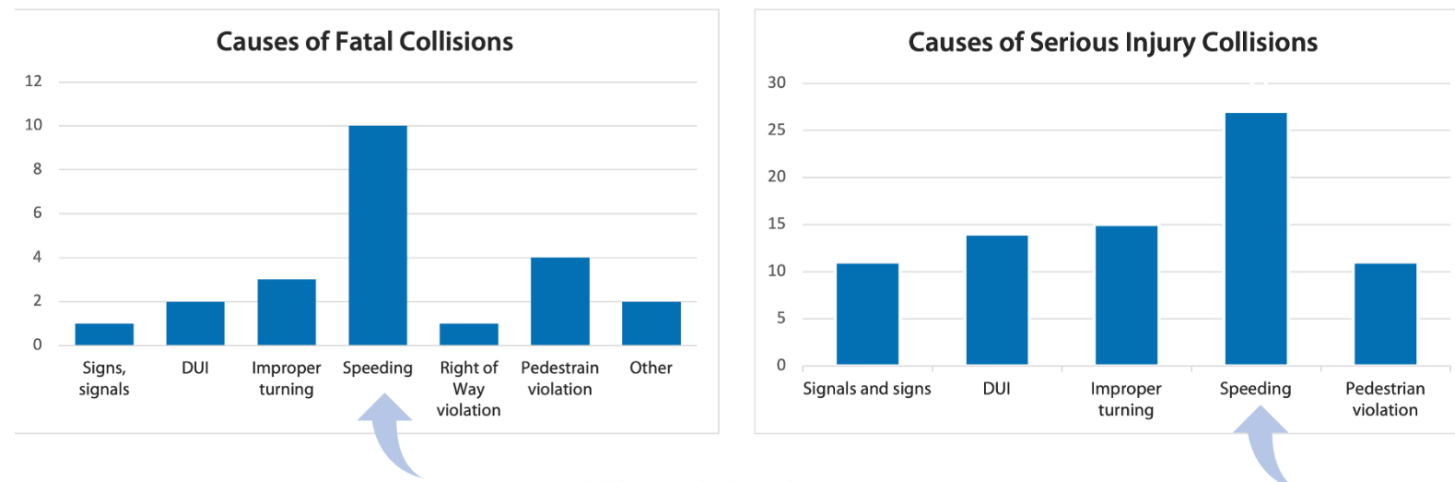
# A Closer Look at Speeding

- Speed identified as a factor in collisions from 2019-2022

## Speeding

U.S. Department of Transportation [speeding data](#).

### Carlsbad Collisions 2019 - 2022\*



\* Through Q2 of 2022

# Acknowledgements & Special Thanks

- Our Panelists Anthony, Thomas, Pete, and Edward
- Extra thanks to Thomas for being our nominator & information-gatherer
- City staff, including Transportation Director Tom Frank, PE
- Other community members and friends of our team that assisted over the past several months
- Strong Towns Staff