

Crash Analysis Studio

Session 17: State College, Pennsylvania

May 31, 2024



Today's Panelists

Dean Chamberlain

Ethan Dean

Nick Rizzio

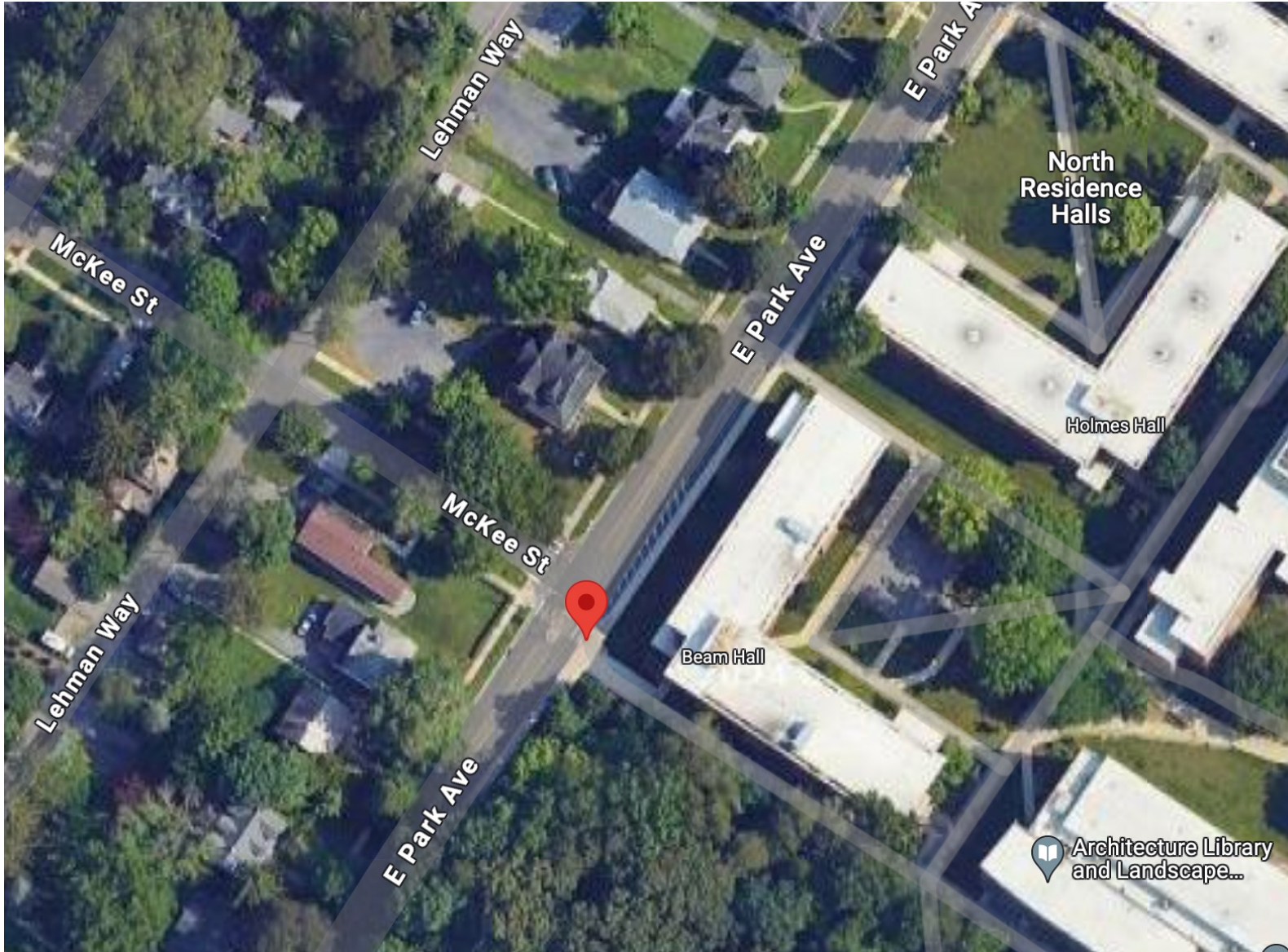
Chuck Marohn

Crash Information

- 25-year-old Penn State student Lovisa Arnesson-Cronhamre was out jogging westbound along the south sidewalk of East Park Avenue when she was struck by a motorist
- 20-year-old Penn State student Ahmed Alqubaisi was driving westbound at an unsafe speed when he lost control of his vehicle and crossed into the eastbound traffic lane
 - His 2024 BMW M3 traveled up onto the sidewalk where he hit Lovisa with his passenger side door after he hit a standpipe and knocked down a light pole; before he came to a stop, he also hit a tree
 - Ahmed was driving on his learner's permit without a licensed driver in the car
- The collision occurred at 7:57 p.m. on September 12, 2023
- Weather reports and the Affidavit of Probable Cause indicate it was partly cloudy weather with light rain in State College that evening

Crash Information

- Lovisa was transported to Mount Nittany Medical Center and then University of Pittsburgh Medical Center (UPMC)-Altoona
 - She died from her injuries around 2:00 a.m. on Wednesday, September 13th
- Ahmed was arrested and charged with third-degree felony homicide by vehicle, recklessly endangering another person, and involuntary manslaughter
- Media coverage states that police did not believe drugs or alcohol to be a factor in this crash





McKee St

McKee St

E Park Ave

rk Ave

Beam Hall

163

Crash Details

- The speed limit on East Park Avenue at this intersection is 35 miles per hour (mph)
 - East Park Avenue widens just beyond the crash location on both sides.
- Lovisa and Ahmed were both international students; Lovisa from Sweden and Ahmed from the United Arab Emirates
- Ahmed was released from jail after a \$3 million bail was posted
 - His formal arraignment was scheduled for October 25, 2023
 - He pled guilty in mid-March to one felony count of accident involving death; he received a sentence ranging from 33 days to 23.5 months in prison with 5 years probation

Crash Details

- The Police Criminal Complaint & Affidavit of Probable Cause state the following:
 - Media sources accurately captured the charges brought against the motorist and the fact that he was driving on a learners permit with no licensed driver
 - The motorist's speed, in conjunction with weather and environmental conditions, contributed to the crash
 - This area is known to have increased vehicle and pedestrian traffic due to its proximity to Penn State

Overall Site Conditions

- **East Park Avenue** has two through traffic lanes; one westbound and one eastbound
 - The intersection with McKee is not signalized
- There is a crosswalk that spans East Park Avenue with a pedestrian refuge area and a crosswalk that spans McKee Street at the crash location
- There's a flashing light, cyclist sign, and streetlight above the East Park Avenue crosswalk
- This area is nearby student housing and is frequented by students, professors, and other people with business at the university



Crash Location
Looking Northeast



**Crash Location Photo
Opposite Corner of Intersection**



**Motorist Approach
East of Crash Location**



© 2023 Google

Motorist POV
Entering into Intersection



Motorist POV
Approaching Westbound