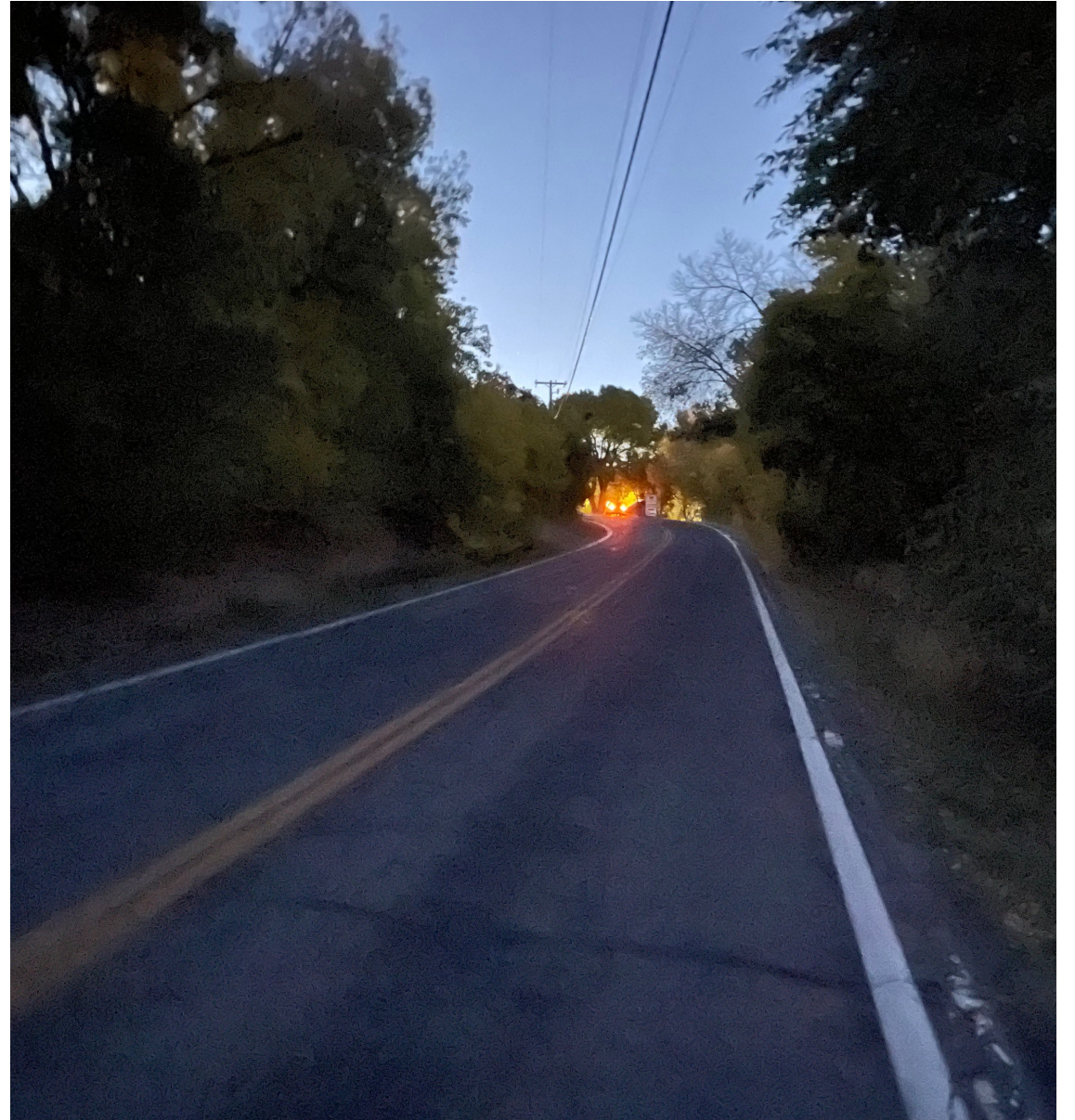




**United Campground Building
NE of Collision Location**



**Trolley Stop
North outside of campground**

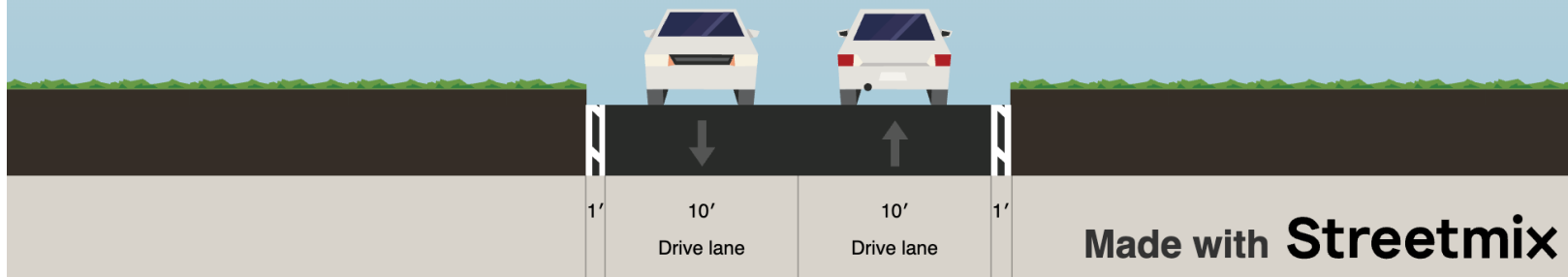


Motorist Perspective Approaching Collision Location at Night



**Motorist Trajectory Toward
Collision Location at Night**

Animas View Drive



Northbound Lane Width: 10'
Southbound Lane Width: 10'
Up to 1 foot of shoulder on each side
Total Width: ~22'

Recent Improvements

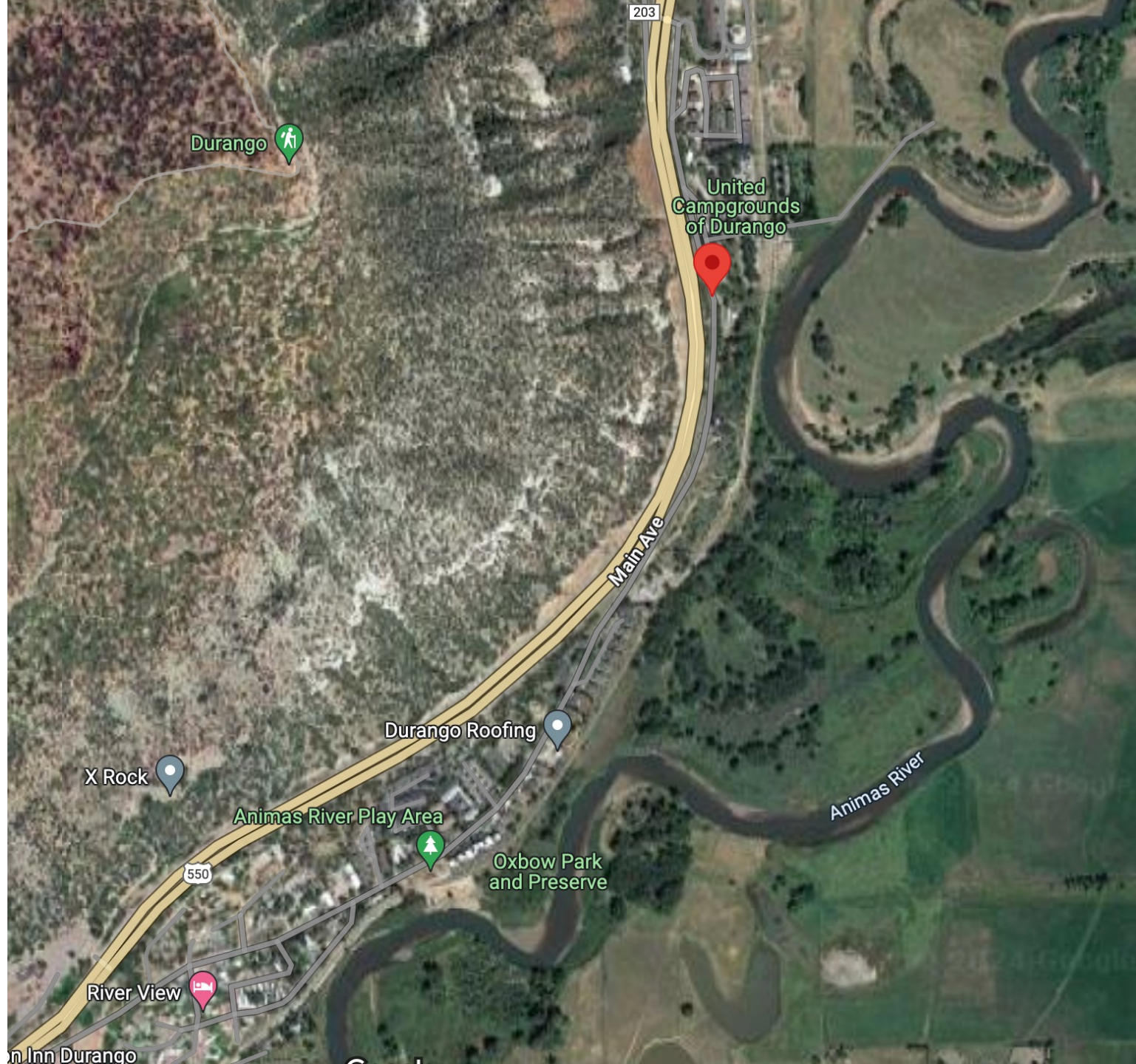
- Materials from a May 22nd Community Meeting indicate the following:
 - Flags replaced on speed limit signs
 - United Campground streetlight has been repaired
 - Pedestrian & Bicycle in Road flashing warning signs installed
 - Sharrows, brush clearing, and additional street lighting are still in process
- These improvements line up with changes outlined from a March press release

City Study

- Toole Design conducted an analysis on this roadway; their report offered a variety of recommendations, including:
 - Automated speed enforcement
 - Crosswalks at transit stops
 - Advisory shoulders
 - Transportation demand management
 - Traffic calming (vertical elements, chicanes/curb extensions, a mini traffic circle, and pinch points or mid-block curb extensions)
 - Possibility of expanded gravel shoulders and rumble strips
- The City is also considering turning Animas View Drive into a one-way southbound street

Overall Site Conditions

- Development pattern features signs of rural and suburban environments
- Runs parallel to Main Avenue (Route 550) – connects to Main on both the south and the north
- Animas View Drive is a former county road that was annexed by the city; never brought into code as it was developed with more dense residential development

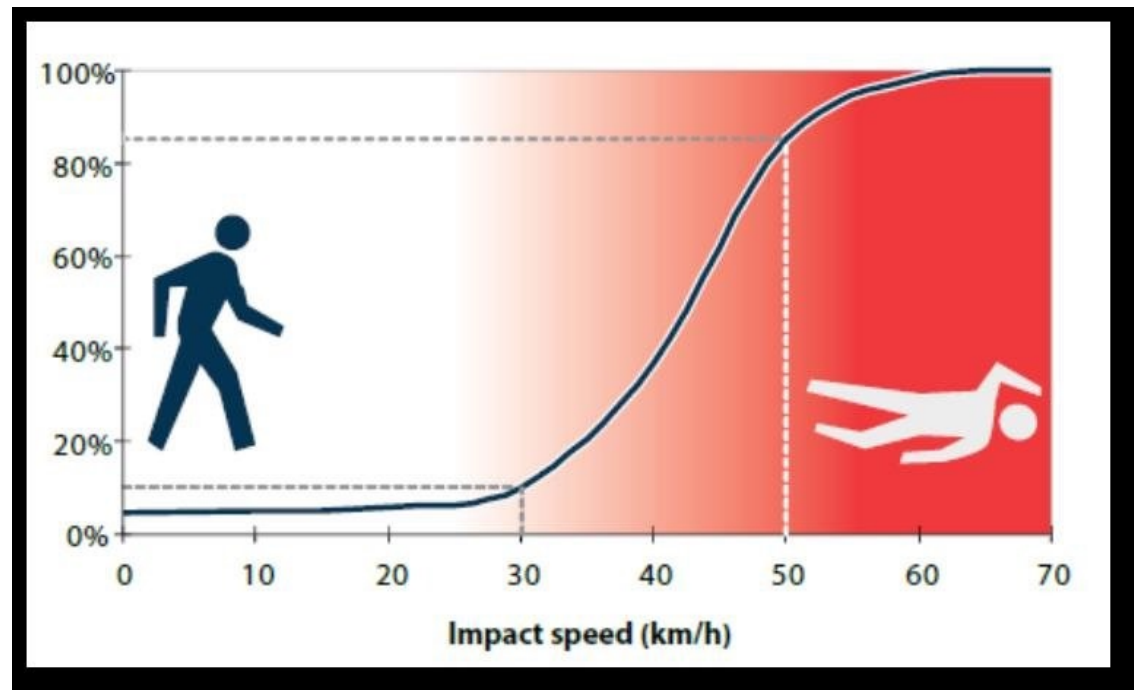


Overall Site Conditions

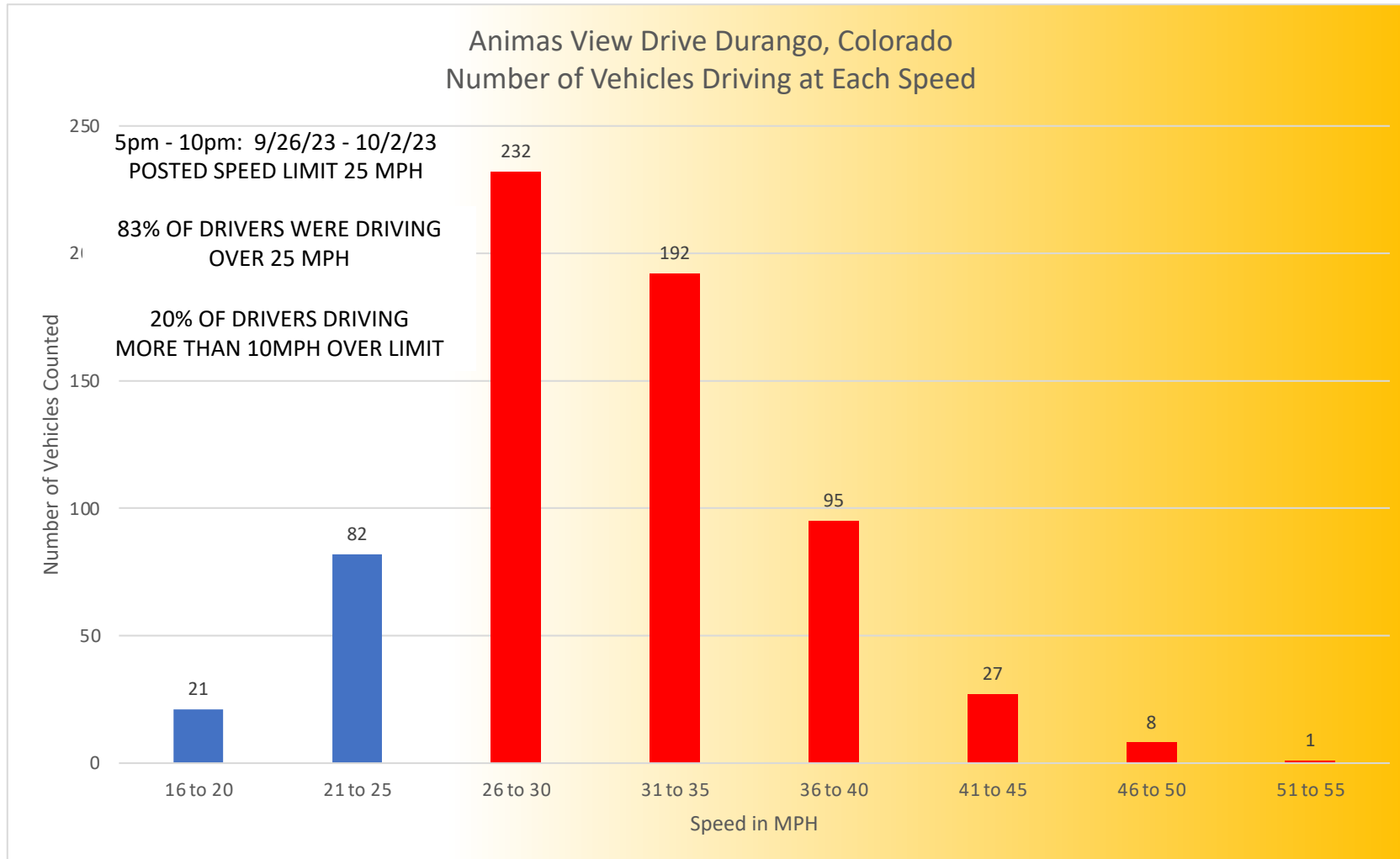
- Preliminary Speed Study indicates significant number of automobiles traveling at fatal speeds

The effects of higher speed limits on traffic fatalities in the United States, 1993–2017.

-Insurance Institute for Highway Safety



Speed Data



669 cars tracked
85th percentile speed: 36 to 40 mph

Acknowledgements & Special Thanks

- Our panelists Anthony, Nancy, Chuck, and Rich
- Nominator Andrew Allport & other community members from Durango who helped with information gathering
- Strong Towns Staff