

Crash Analysis Studio

Session 20: Boone, North Carolina

August 16, 2024



Today's Panelists

Don Kostelec

Laura Buck

Jonah Bird

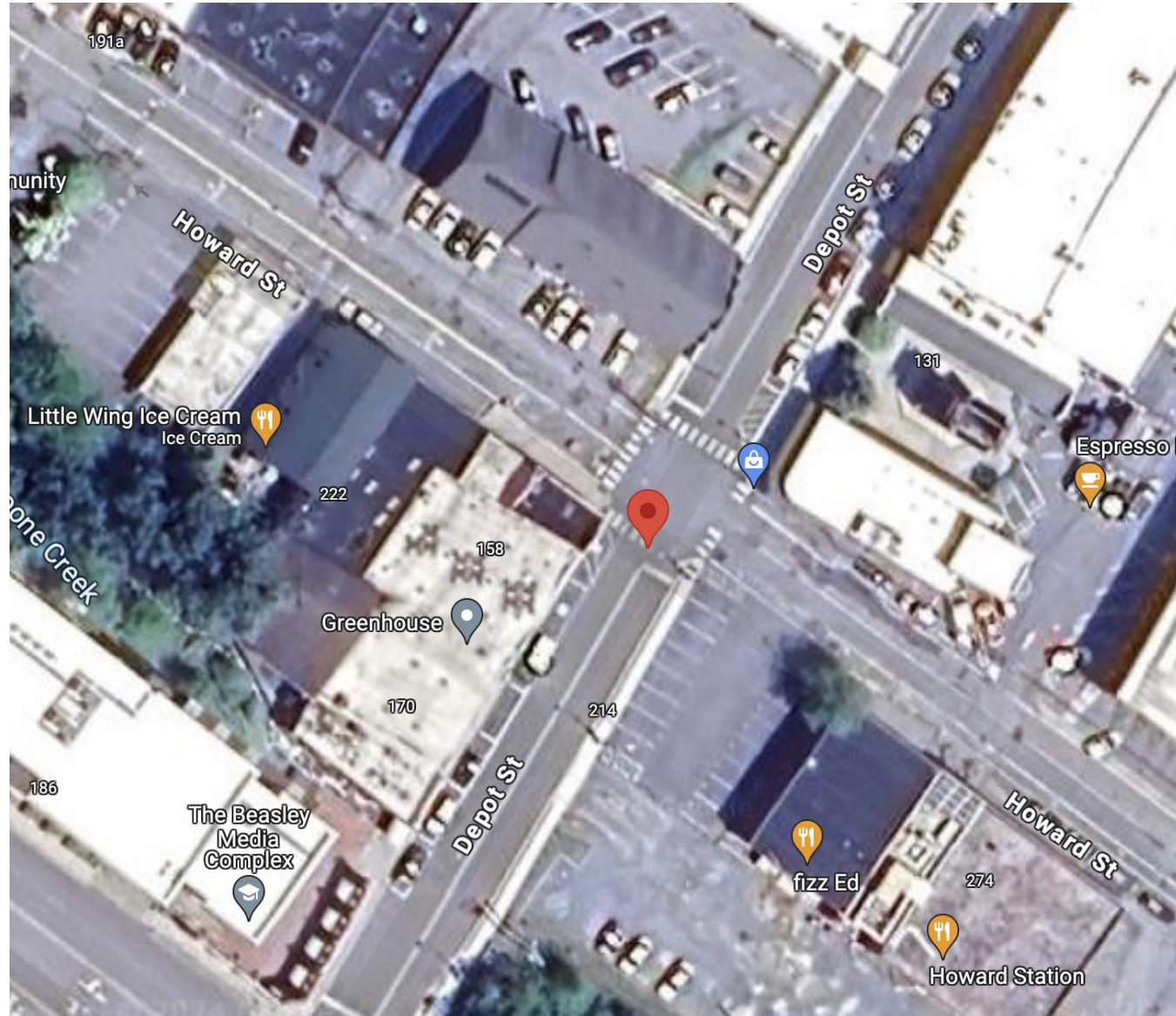
Edward Erfurt

Crash Information

- Diana Reyes Angeles was walking eastbound across Depot Street at a designated crossing
- A westbound motorist on Howard Street turned left to go south on Depot when he struck Angeles
 - The motorist stated he could not see Angeles over the hood of his truck; he wasn't aware she was there until he was already striking her.
- The crash occurred at 12:49 p.m. on August 21, 2023
- Weather reports tell us it was partly cloudy in Boone on the day of the crash

Crash Information

- Witnesses to the crash state that the motorist did not appear to look for pedestrians before making his turn
- Upon impact, Angeles was thrown to the ground; a pair of headphones helped break her fall
- She was transported to Watauga Medical Center; medical professionals stated she had a concussion

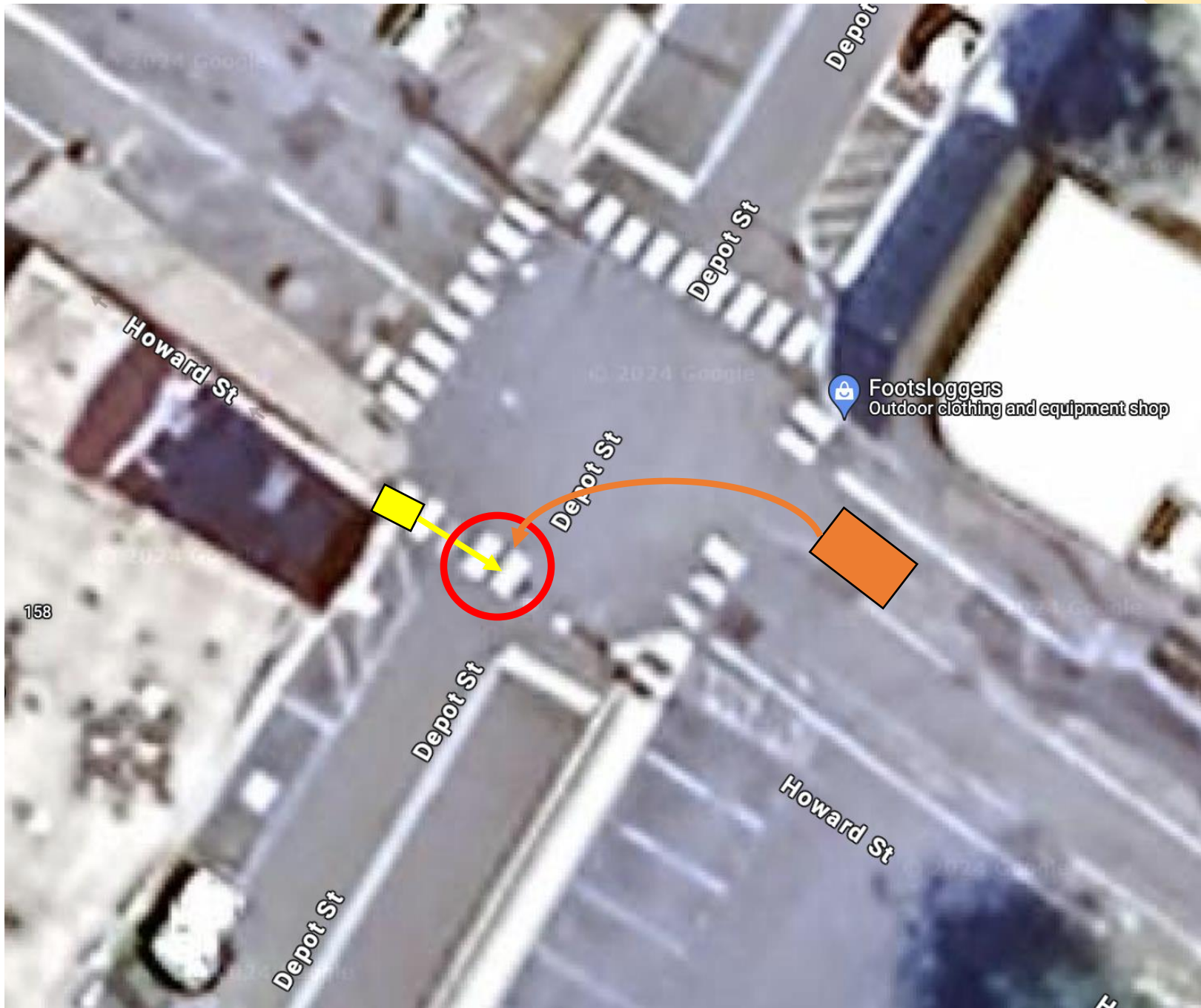




DEPOT ST
152

NO LEFT TURN
ON RED LIGHT

E-8



Further Details

- The speed limit on Howard Street is 20 mph
- The west side of Howard Street after the intersection with Depot is a one-way street
- Though the intersection is unsignalized, there are stop signs on each leg other than west Howard
 - There are also visible crosswalks along each leg of the intersection

Further Details

- Depot Street has one northbound, one southbound, and one parking lane
 - This is true on both sides of the street, the location of the parking lane just alternates (chicane parking lanes)
- The speed limit on Depot Street is also 20 mph; its sidewalks make it a very walkable area
- Depot Street intersects with King Street, which is the main commercial roadway in downtown Boone



Looking S/SW Toward Crash Location



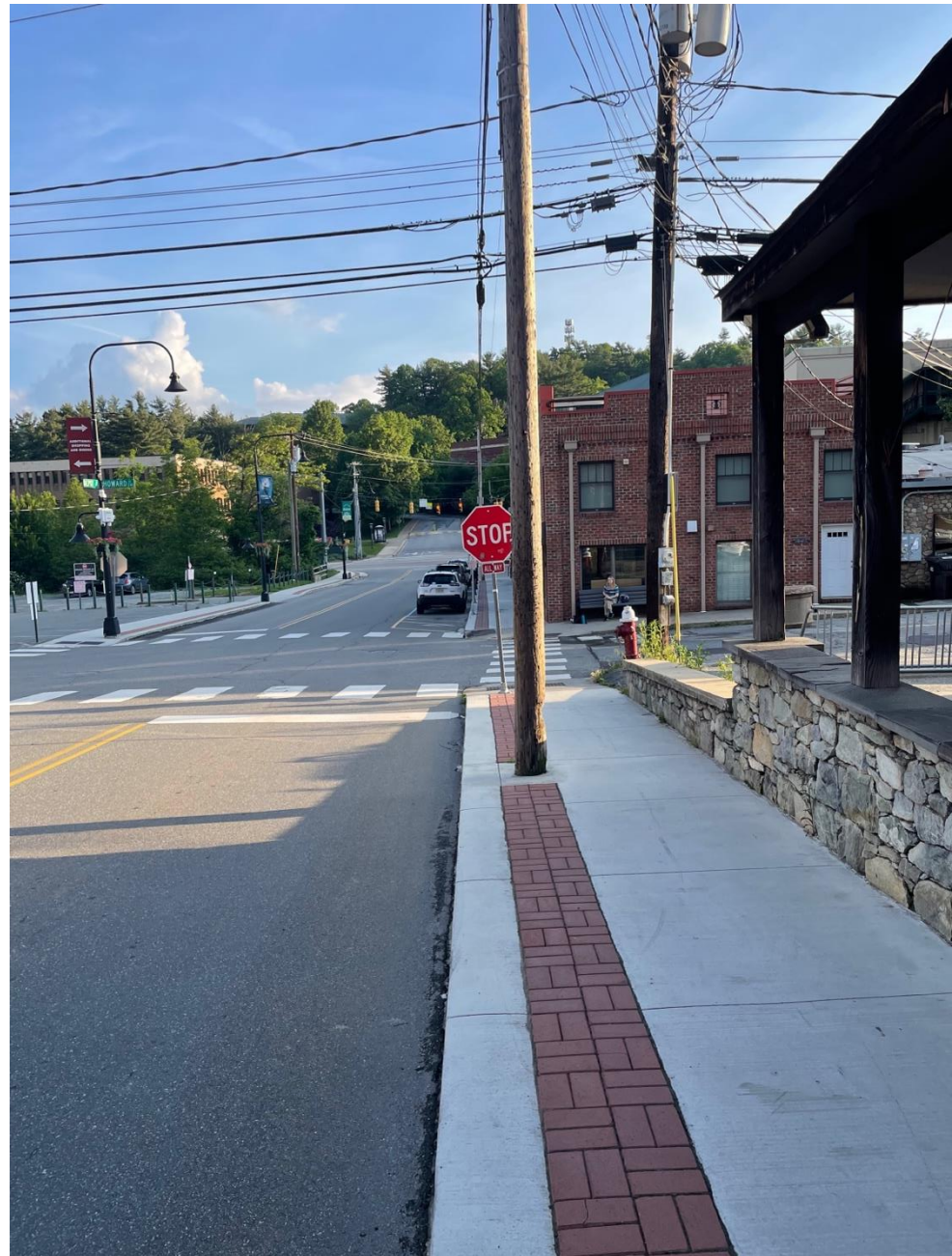
Looking E/NE Toward Intersection



Looking NW from SE Corner

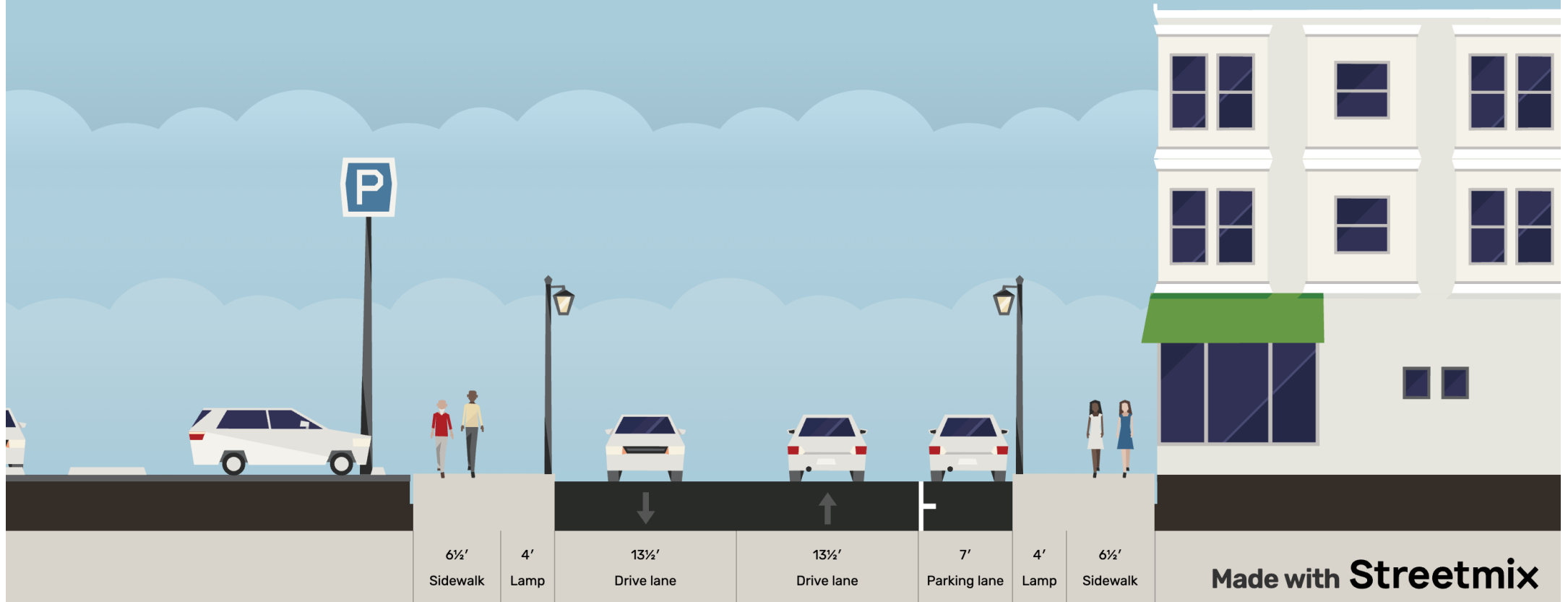


**Looking East on Howard
From West of Intersection**



**Looking South onto Depot Street
From NW Vantage Point**

Depot Street



Northbound & Southbound Lane Widths: 13.5' (each)

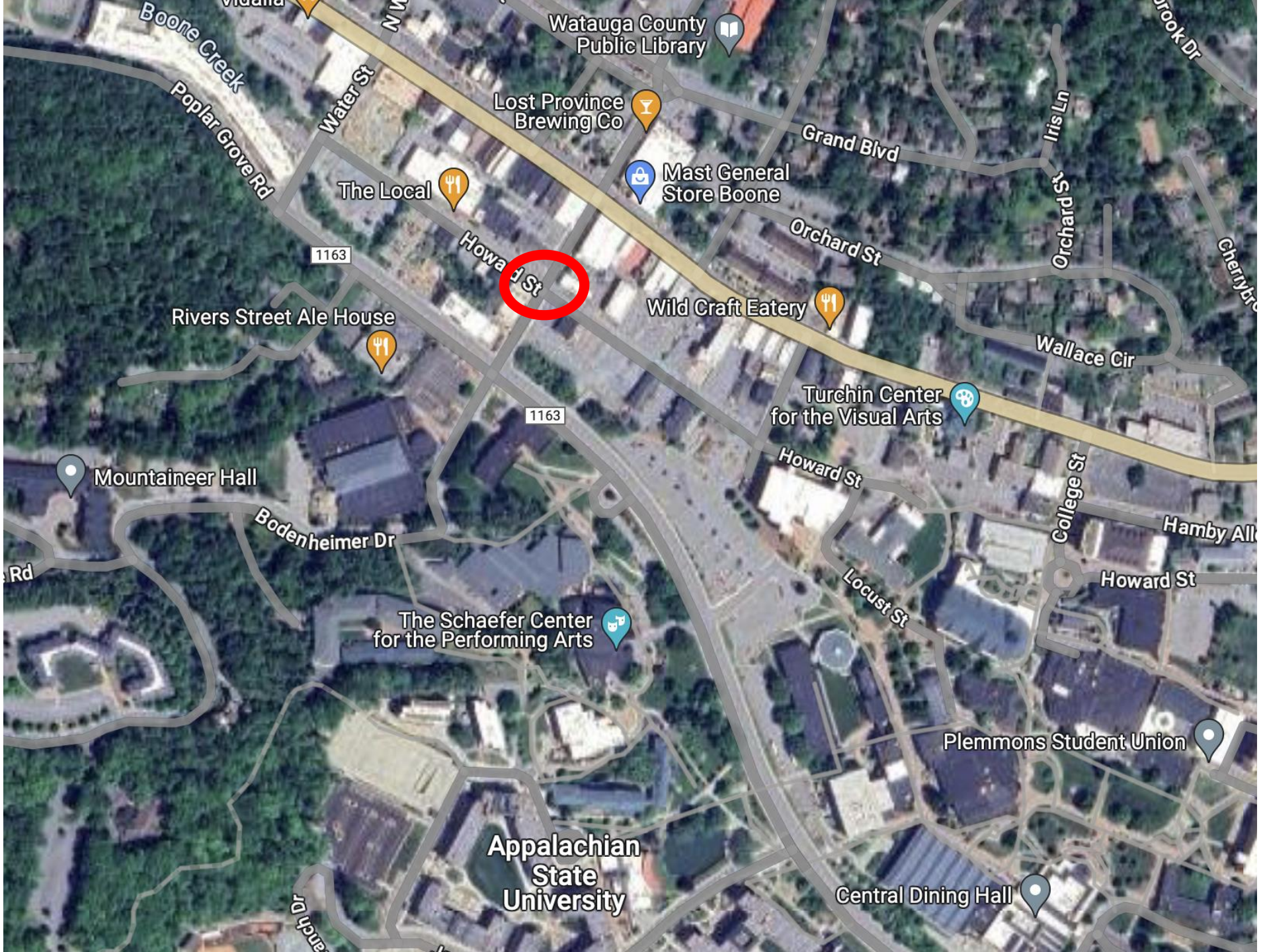
Parking Lane Width: 7.5'

Distance Across Lanes: 34.5'

Total Width including Sidewalks & Lamps: 55.5'

Overall Site Conditions

- Development pattern features clear urban characteristics of a downtown area
- The intersection features access to Lost Province Brewing Company, the Footsloggers outdoor store, and multiple food establishments like Little Wing Ice Cream
- Appalachian State University is located south of the intersection
- Howard Street can be used to access Appalachian Street and Water Street, both of which connect to Highway 321/421 (King Street)

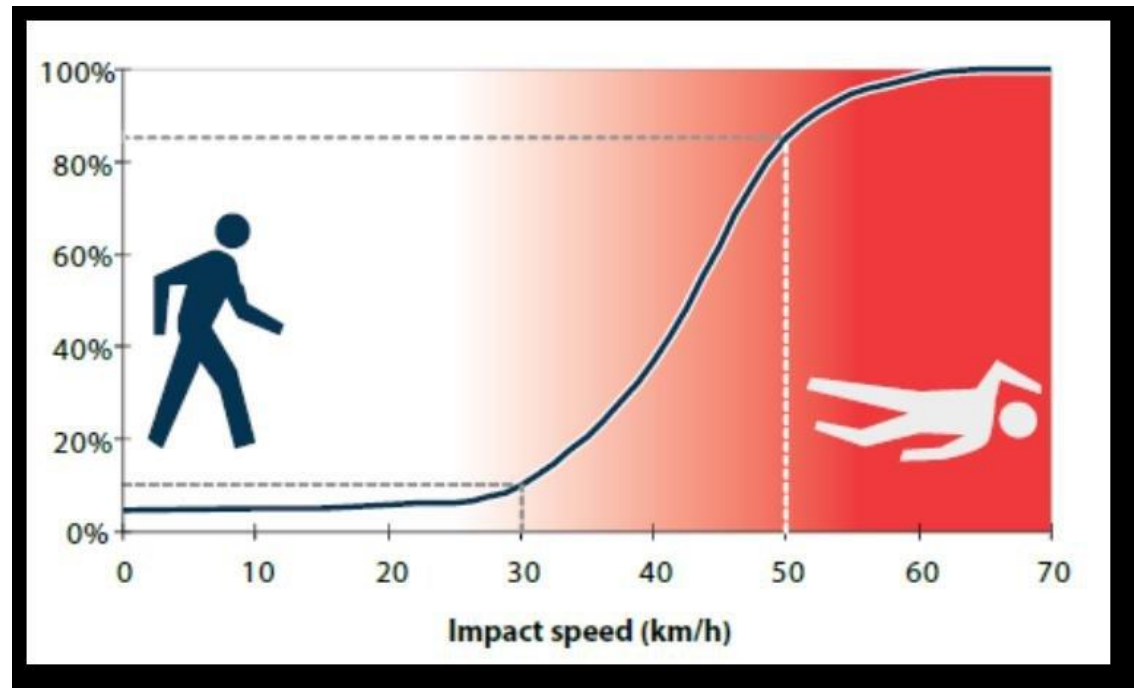


Overall Site Conditions

- Preliminary Speed Study indicates significant number of automobiles traveling at fatal speeds

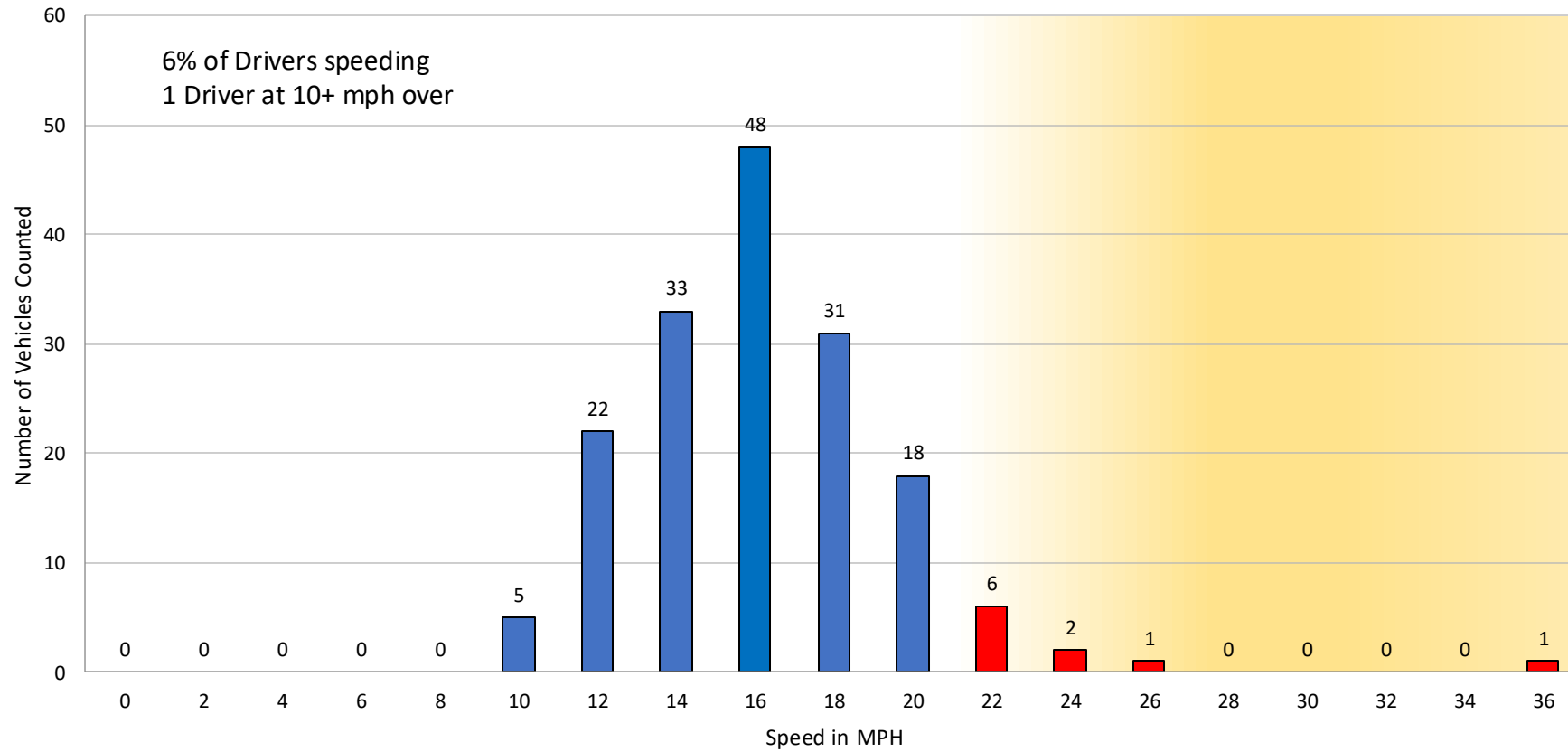
The effects of higher speed limits on traffic fatalities in the United States, 1993–2017.

-Insurance Institute for Highway Safety



Speed Data

Depot Street - Boone, North Carolina
Number of Vehicles Driving at Each Speed



167 cars tracked
85th percentile speed: 20 mph

Acknowledgements & Special Thanks

- Our panelists Jonah, Don, Laura, and Edward
- Special thanks to Laura for nominating this crash and gathering information
- Boone community members who assisted over the past few months
- Strong Towns Staff