

Crash Analysis Studio

Nicoll Street & Willow Street in New Haven, Connecticut

April 2, 2025

Today's Panelists

Alder Caroline Smith - Ward 9

Alder Anna Festa - Ward 10

Peter Clarke - Resident Expert

Rishabh Mittal - Technical Expert

Crash Information

- Zabriena Vega and Christina Brown collided while driving through the intersection of Nicoll & Willow Street in New Haven.
- Vega was driving northbound in a Honda Accord on Nicoll; Brown was westbound in a Hyundai on Willow.
- The crash occurred at 7:57 am on November 7, 2024.
- Weather reports tell us it was partly cloudy in the 50s in New Haven that morning.

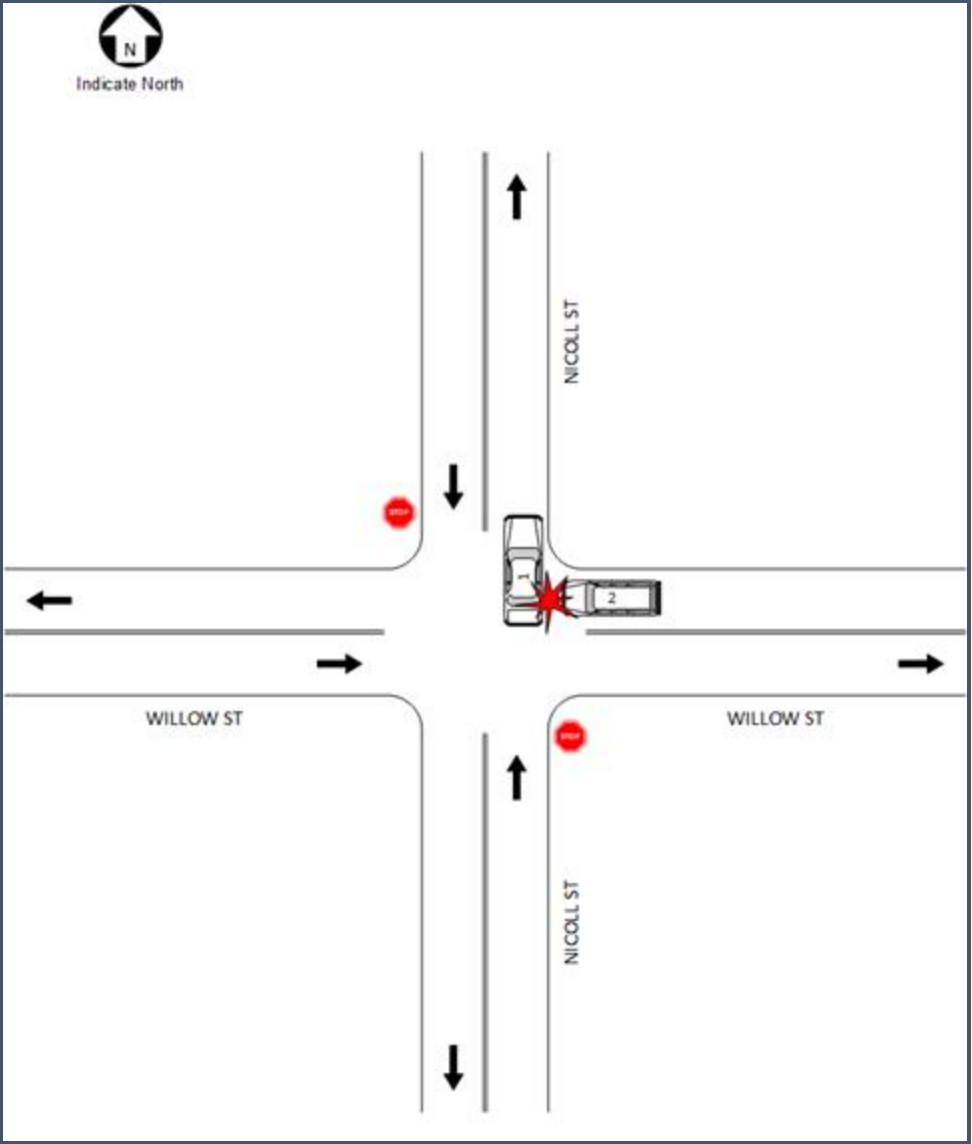
Crash Information

- Vega reported she stopped at the stop sign and that Brown collided with her as they both moved through the intersection.
- Brown indicated Vega approached from her left and cut across her path, making the collision unavoidable.
- The speed limit on each street is 25 miles per hour, which is the standard limit on many neighborhood roads in this area.

Crash Location



Crash Diagram



Crash Diagram



Crash Details

- There were no fatalities, but Vega's passenger sustained a bruise under her eye and both cars were damaged.
 - Honda Accord: right-side rear section damage
 - Hyundai: functional front section damage
- Crash report lists Vega was at fault for running the Nicoll Street stop sign.
- Report notes that Body Worn Camera (BWC) footage is available.

Overall Site Conditions

- **Both streets** feature two through travel lanes and some capacity for street parking.
- Bicyclists often share both the roads with motorists. There is heavy traffic in this area during peak travel times.
- This is not a signalised intersection.
 - There are stop signs on Nicoll St.
 - On Willow street, crossings are marked and have 'Yield to pedestrians' signage.



**Approaching Intersection
NB Nicoll Vantage Point**



Entering Intersection
NB Nicoll Vantage Point



**Crash Location Photo
WB Willow Vantage Point**



Intersection from SW Corner (looking NE)



Intersection from NW Corner (looking SE)



Crosswalk - West Side of Willow



Crosswalk - East Side of Willow



Car Stopped - North Side of Nicoll

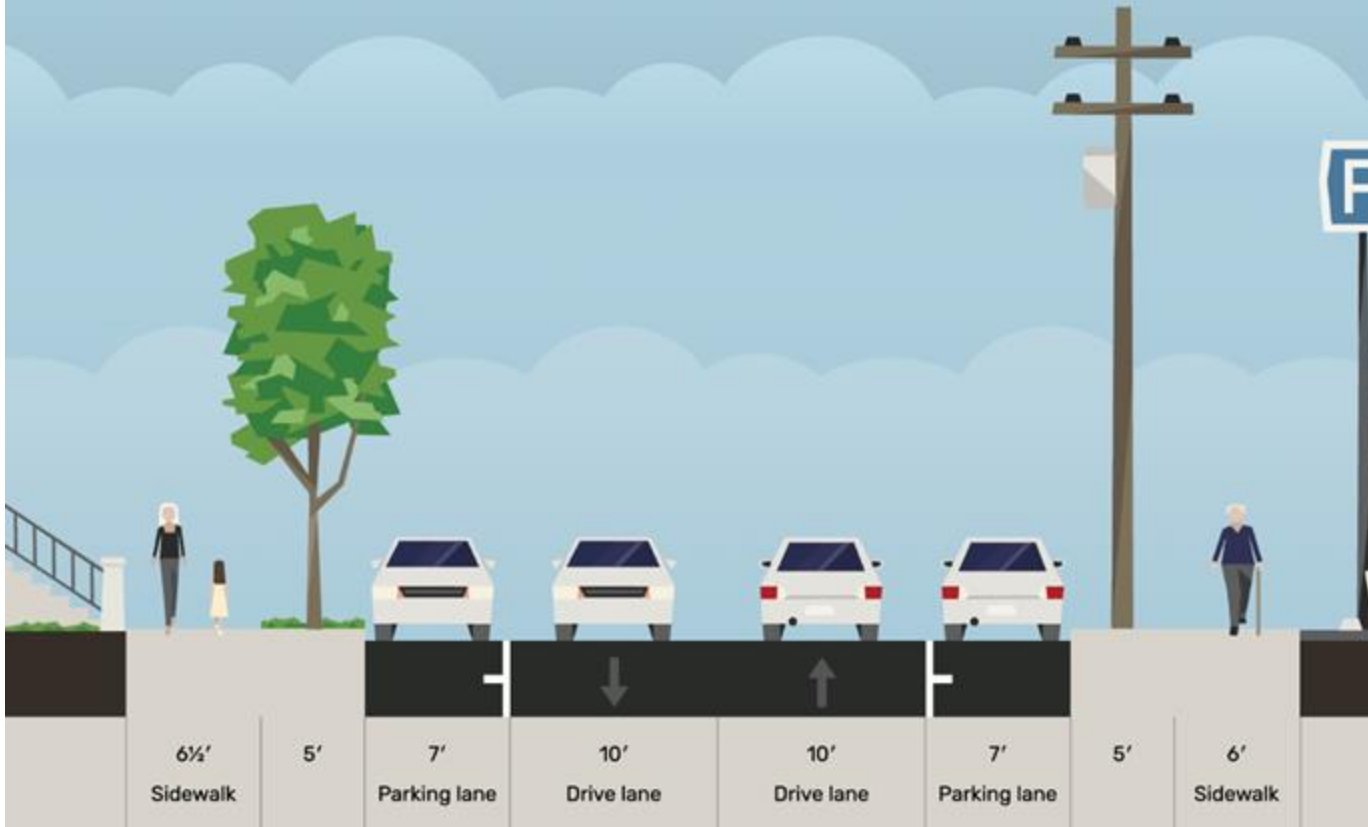


Facing East on Willow (Distance)



Facing East on Willow (at Intersection)

Nicoll St - Both Sides



Two 10' Wide Through Traffic Lanes

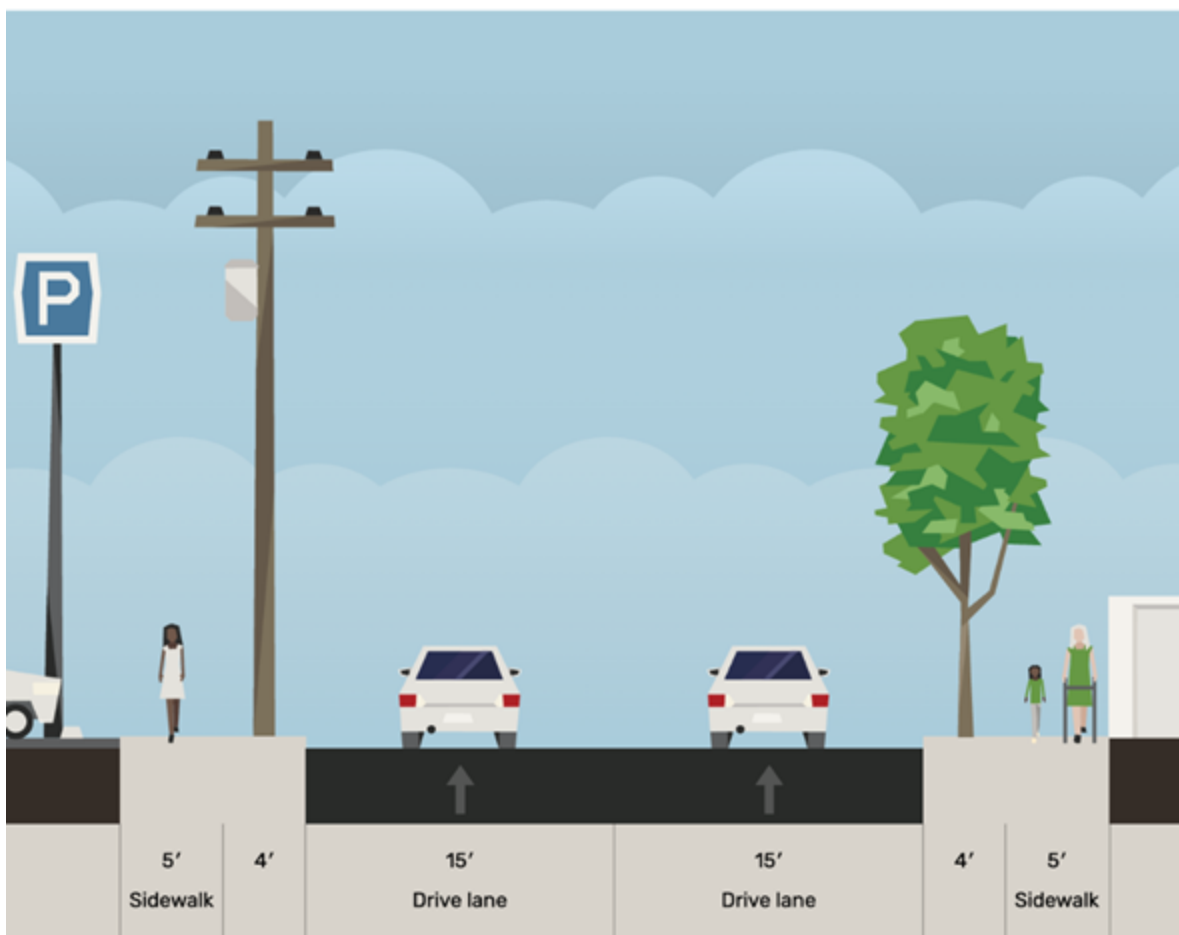
Two 7' Wide Parking Lanes

5' Planter + Pole areas; 6' & 6.5' Sidewalks

Total width: 54.5' (34 feet across pavement)



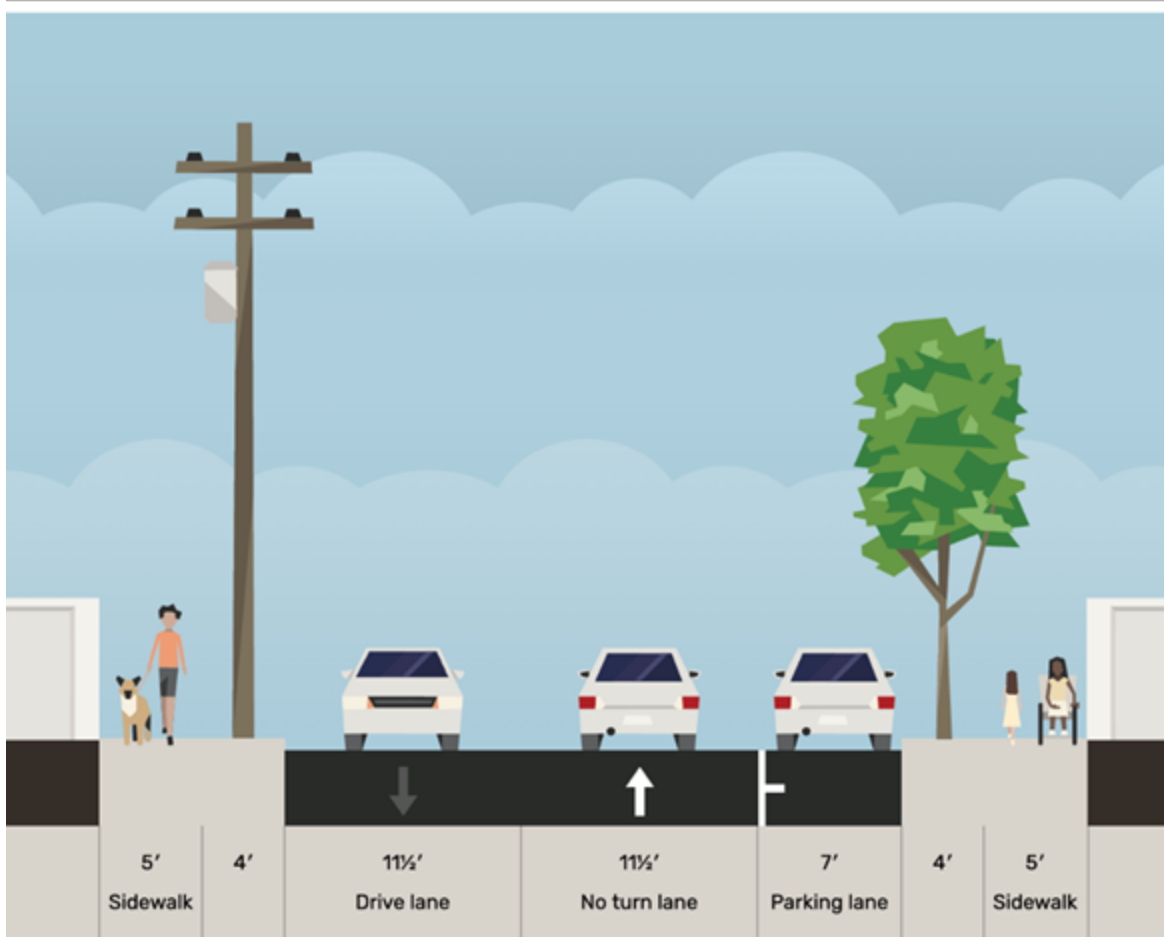
Willow St. - Eastbound



Two 15' wide through traffic lanes
4' planter and pole area; 5' sidewalks
Total width: 48' (30' across pavement)



Willow St. - Westbound



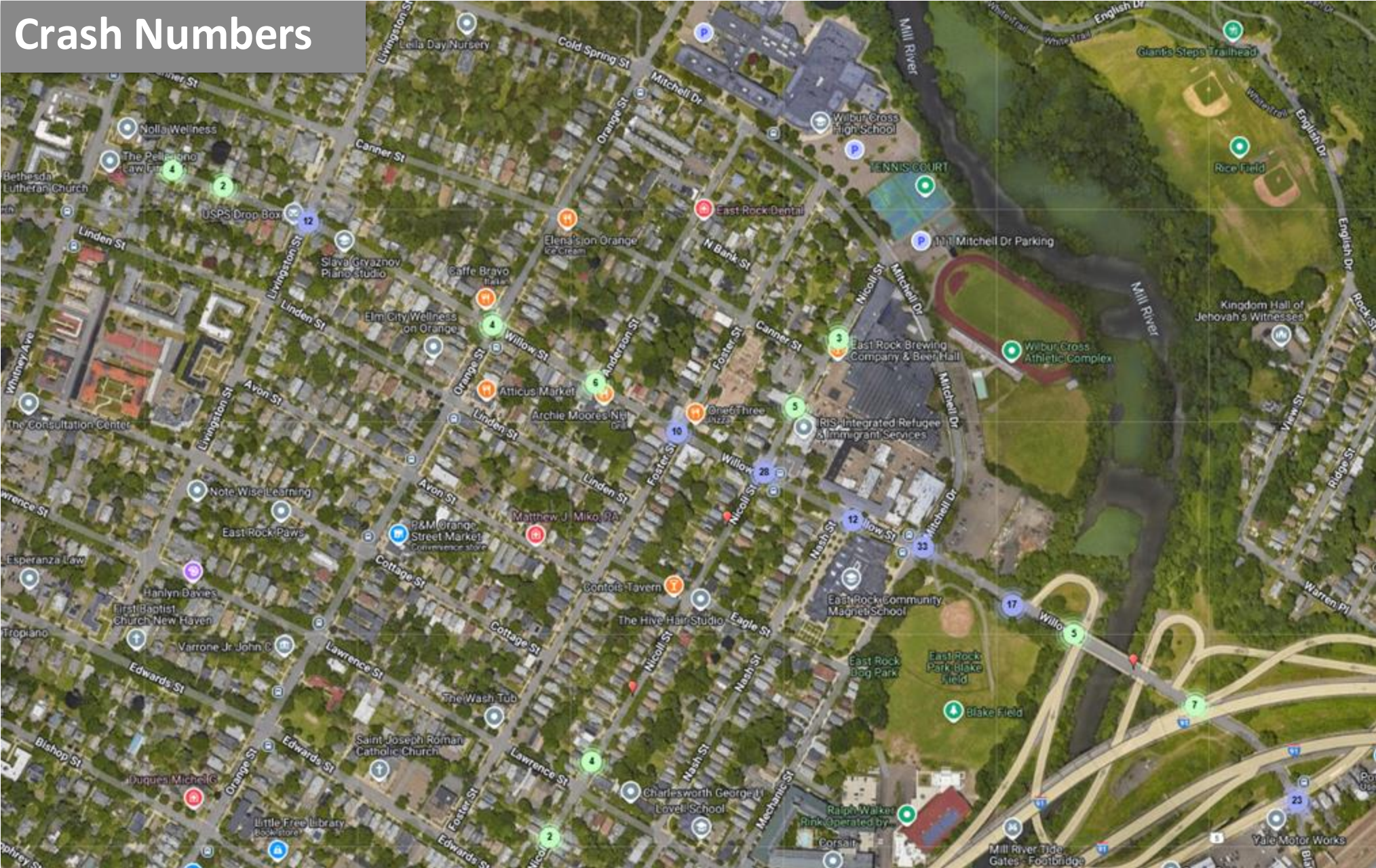
Two 11.5' wide through traffic lanes
One 7' wide parking lane
4' planter and pole area; 5' sidewalks
Total width: 48' (30' across pavement)



Overall Site Conditions

- This is a multi-family, mixed use development pattern with commercial buildings, some single family homes, and other residences.
- Intersection is a few blocks west of on and off ramps that connect Willow Street with Interstate 91.
- Proximity to Wilbur Cross High School and East Rock Community Magnet School.
- Nearby athletic and sporting facilities make this area a destination during special events.

Crash Numbers



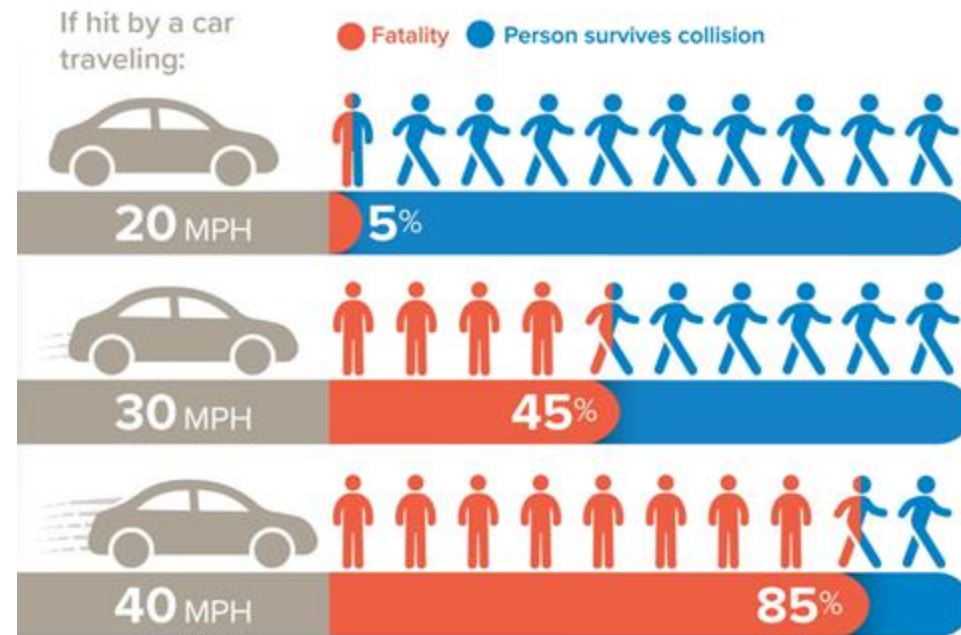
Total Crashes: 177

Intersections are the crash hotspots.

At Nicoll & Willow:
28 crashes

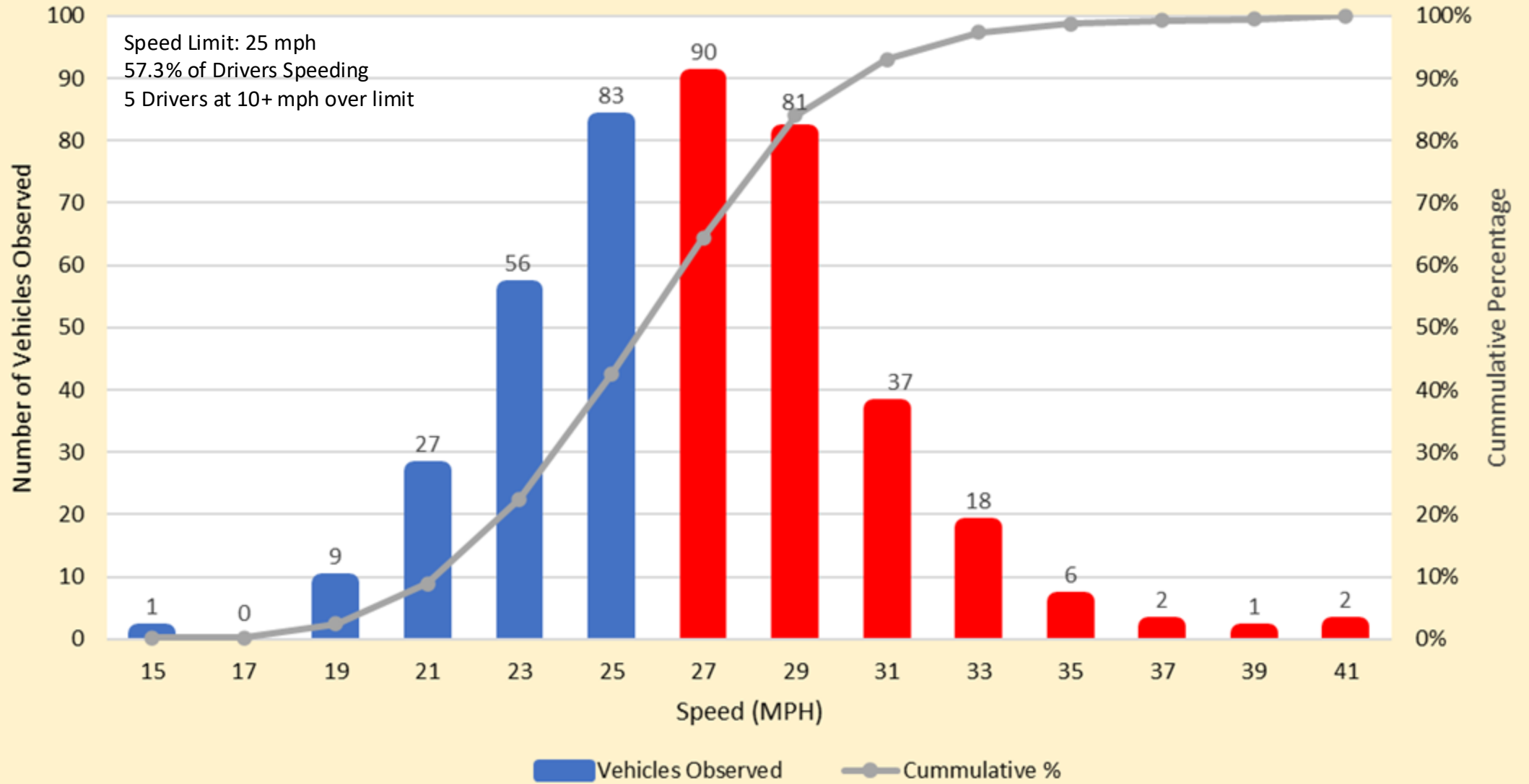
Overall Site Conditions - Speed Data

- Preliminary Speed Study indicates significant number of automobiles traveling at dangerously high—and potentially lethal—speeds



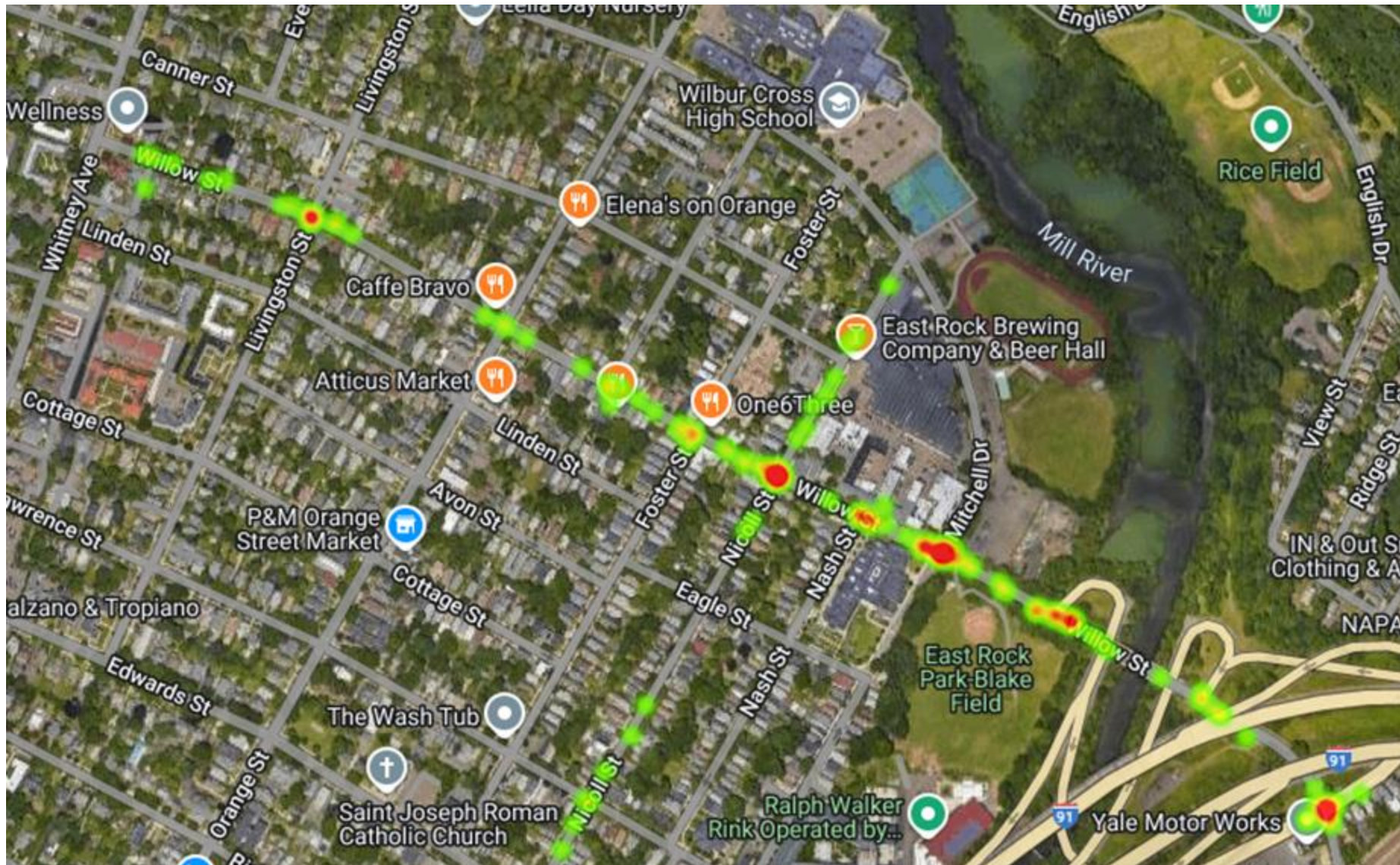
National Traffic Safety Board (2017) Reducing Speeding-Related Crashes Involving Passenger Vehicles. Available from: <https://www.nts.gov/safety/safety-studies/Documents/SS1701.pdf>

Speed Study at Willow St



413 cars tracked
85th percentile speed: 29 mph

Crash Map - Reviewing the last 5 years



Total Crashes: 177

Intersections are the crash hotspots.

At Nicoll & Willow:
28 crashes

Why this location? - *Context*

- Community has expressed concerns about this intersection; it has received considerable media coverage.
- This intersection has a lot of pedestrian traffic.
- There are multiple schools nearby.
- This intersection—and the surrounding area—are hotspots for car crashes.

Acknowledgements & Special Thanks

- Our panelists, including Alder Smith, Alder Festa, Rishabh Mittal, and Peter Clarke.
- Special thanks to Stronger Haven - our local conversation group for gathering data and preparing today's information.
- Helpful community members, friends, colleagues, and Strong Towns staff



Looking at Additional Crashes in New Haven

- New Haven's next session is going to be sometime soon!
- Interested in helping out? Fill out this form:



<https://gqr.sh/FzSH>

For more info, contact our local group at contact@strongerhaven.org